

For Research Use Only

Mouse KIM-1/HAVCR1 Recombinant antibody, PBS Only (Capture)



Catalog Number: 83064-4-PBS

Basic Information

| | | |
|--------------------------------|---|--|
| Catalog Number: 83064-4-PBS | GenBank Accession Number: NM_134248 | Purification Method: Protein A purification |
| Size: 1 mg/ml | GeneID (NCBI): 171283 | CloneNo.: 230336D12 |
| Source: Rabbit | UNIPROT ID: Q5QNS5 | |
| Isotype: IgG | Full Name: hepatitis A virus cellular receptor 1 | |
| | Calculated MW: 33 kDa | |

Applications

Tested Applications:
Cytometric bead array, Sandwich ELISA, Indirect ELISA, Sample test

Species Specificity:
mouse

Background Information

Storage

Storage:
Store at -80°C.
The product is shipped with ice packs. Upon receipt, store it immediately at -80°C

Storage Buffer:
100% PBS pH 7.3

For technical support and original validation data for this product please contact:

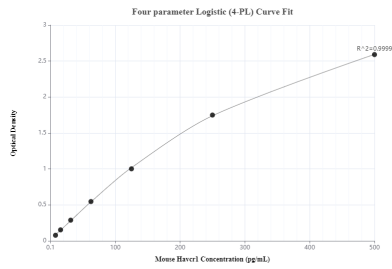
T: 4006900926

E: Proteintech-CN@ptglab.com

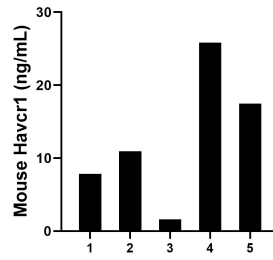
W: ptgcn.com

This product is exclusively available under Proteintech Group brand and is not available to purchase from any other manufacturer.

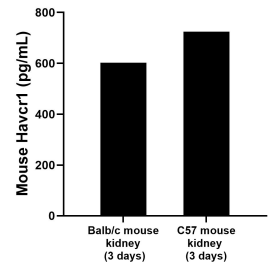
Selected Validation Data



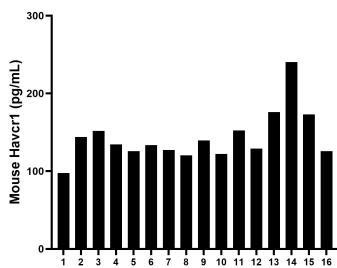
Sandwich ELISA standard curve of MP00116-3, Mouse KIM-1/HAVCR1 Recombinant Matched Antibody Pair - PBS only. 83064-4-PBS was coated to a plate as the capture antibody and incubated with serial dilutions of standard Eg0571. 83064-5-PBS. was HRP conjugated as the detection antibody. Range: 0.625-10 ng/mL



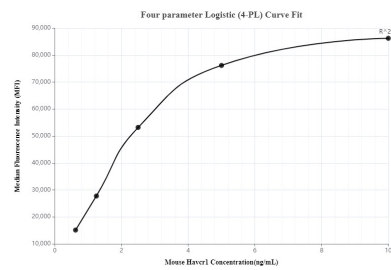
Urine of five mice was measured. The Havcr1 concentration of detected samples was determined to be 12.73 ng/mL with a range of 1.61-25.85 ng/mL



Kidneys from mice were removed, rinsed in 1X PBS, and kept on ice in 1X PBS. Kidneys were then homogenized using a tissue homogenizer and seeded into media containing RPMI-1640 supplemented with 10% fetal bovine serum, 2 mM L-glutamine, 100 U/mL penicillin, and 100 mg/mL streptomycin sulfate. Cells were cultured for the times indicated. The mean Havcr1 concentration was determined to be 602.5 pg/mL in Balb/c mouse kidney, 724.5 pg/mL



Serum of sixteen mice was measured. The Havcr1 concentration of detected samples was determined to be 143.31 pg/mL with a range of 97.69-240.45 pg/mL



Cytometric bead array standard curve of MP00116-3, Mouse KIM-1/HAVCR1 Recombinant Matched Antibody Pair, PBS Only. Capture antibody: 83064-4-PBS. Detection antibody: 83064-5-PBS. Standard: Eg0571. Range: 0.625-10 ng/mL