

For Research Use Only

# ECM1 Recombinant antibody, PBS Only (Capture/Detector)

Catalog Number:83067-1-PBS



## Basic Information

<b>Catalog Number:</b> 83067-1-PBS	<b>GenBank Accession Number:</b> BC023505	<b>Purification Method:</b> Protein A purification
<b>Size:</b> 1mg/ml	<b>GeneID (NCBI):</b> 1893	<b>CloneNo.:</b> 230321A4
<b>Source:</b> Rabbit	<b>UNIPROT ID:</b> Q16610	
<b>Isotype:</b> IgG	<b>Full Name:</b> extracellular matrix protein 1	
	<b>Calculated MW:</b> 540 aa, 61 kDa	

## Applications

**Tested Applications:**  
Cytometric bead array, Sandwich ELISA, Indirect ELISA,  
Sample test

**Species Specificity:**  
human

## Background Information

### Storage

**Storage:**  
Store at -80°C.  
**The product is shipped with ice packs. Upon receipt, store it immediately at -80°C**

**Storage Buffer:**  
100% PBS pH 7.3

For technical support and original validation data for this product please contact:

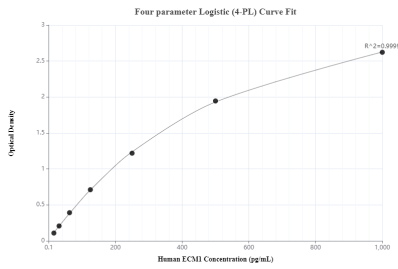
T: 4006900926

E: [Proteintech-CN@ptglab.com](mailto:Proteintech-CN@ptglab.com)

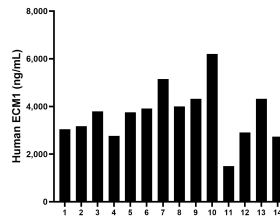
W: [ptgcn.com](http://ptgcn.com)

**This product is exclusively available under Proteintech Group brand and is not available to purchase from any other manufacturer.**

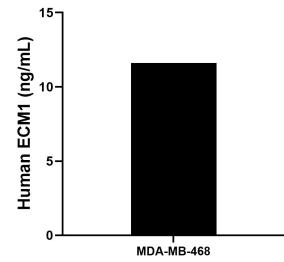
## Selected Validation Data



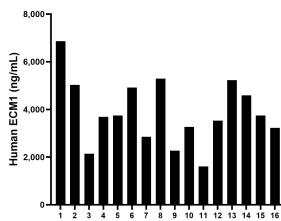
Sandwich ELISA standard curve of MP00011-4, Human ECM1 Recombinant Matched Antibody Pair - PBS only. 83067-7-PBS was coated to a plate as the capture antibody and incubated with serial dilutions of standard Eg0533. 83067-1-PBS was HRP conjugated as the detection antibody. Range: 15.6-1000 pg/mL



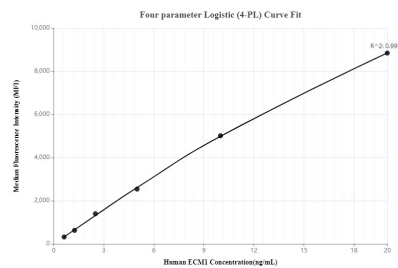
Plasma of fourteen individual healthy human donors was measured. The ECM1 concentration of detected samples was determined to be 3,683.47 ng/mL with a range of 1,495.22-6,198.62 ng/mL



MDA-MB-468 were cultured in DMEM supplemented with 10% fetal calf serum, 50  $\mu$  M  $\beta$ -mercaptoethanol, 2 mM L-glutamine, 100 U/mL penicillin and 100  $\mu$  g/mL streptomycin sulfate. The cell culture supernatant was removed, assayed for human ECM1, and measured 11.6 ng/mL



Serum of fourteen individual healthy human donors was measured. The ECM1 concentration of detected samples was determined to be 3,875.31 ng/mL with a range of 1,605.39-6,867.83 ng/mL



Cytometric bead array standard curve of MP00011-3, ECM1 Recombinant Matched Antibody Pair, PBS Only. Capture antibody: 83067-1-PBS. Detection antibody: 83067-4-PBS. Standard: Eg0533. Range: 0.625-20 ng/mL