

For Research Use Only

PARP2 Recombinant antibody, PBS Only (Detector)

Catalog Number: 83071-3-PBS



Basic Information

Catalog Number:

83071-3-PBS

Size:

1mg/ml

Source:

Rabbit

Isotype:

IgG

GenBank Accession Number:

NM_005484

GeneID (NCBI):

10038

UNIPROT ID:

Q9UGN5

Full Name:

poly (ADP-ribose) polymerase 2

Calculated MW:

66 kDa

Purification Method:

Protein A purification

CloneNo.:

230386E12

Applications

Tested Applications:

Cytometric bead array, Sandwich ELISA, Indirect ELISA,
Sample test

Species Specificity:

human

Background Information

Storage

Storage:

Store at -80°C.

The product is shipped with ice packs. Upon receipt, store it immediately at -80°C

Storage Buffer:

100% PBS pH 7.3

For technical support and original validation data for this product please contact:

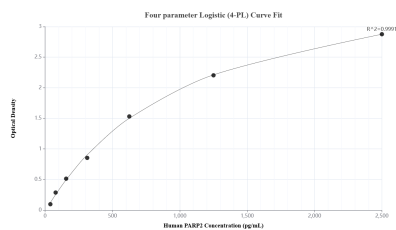
T: 4006900926

E: Proteintech-CN@ptglab.com

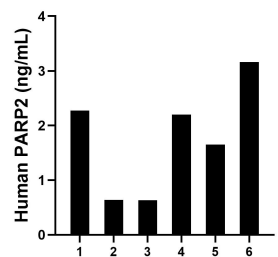
W: ptgcn.com

This product is exclusively available under Proteintech Group brand and is not available to purchase from any other manufacturer.

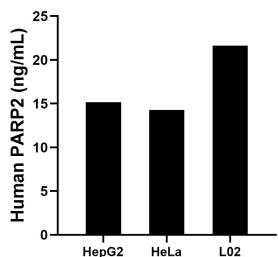
Selected Validation Data



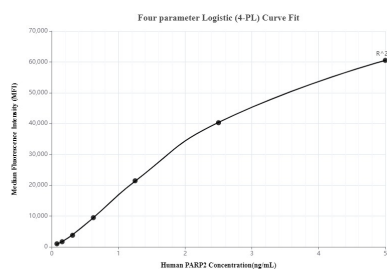
Sandwich ELISA standard curve of MP00045-4, Human PARP2 Recombinant Matched Antibody Pair - PBS only. 83071-5-PBS was coated to a plate as the capture antibody and incubated with serial dilutions of standard SY01205. 83071-3-PBS was HRP conjugated as the detection antibody. Range: 39.1-2500 pg/mL.



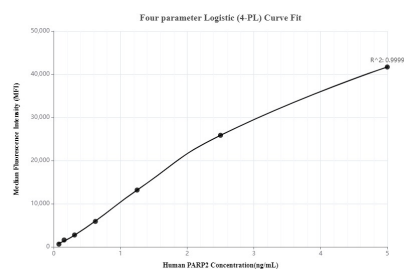
Serum of six individual healthy human donors was measured. The PARP2 concentration of detected samples was determined to be 1.8 ng/mL with a range of 0.6-3.2 ng/mL.



The mean PARP2 concentration was determined to be 15.2 ng/mL in HepG2 cell extract based on a 2.0 mg/mL extract load, 14.3 ng/mL in HeLa cell extract based on a 1.2 mg/mL extract load and 21.6 ng/mL in L02 cell extract based on a 1.3 mg/mL extract load.



Cytometric bead array standard curve of MP00045-1, PARP2 Recombinant Matched Antibody Pair, PBS Only. Capture antibody: 83071-1-PBS. Detection antibody: 83071-3-PBS. Standard: SY01205. Range: 0.078-5 ng/mL.



Cytometric bead array standard curve of MP00045-3, PARP2 Recombinant Matched Antibody Pair, PBS Only. Capture antibody: 83071-2-PBS. Detection antibody: 83071-3-PBS. Standard: SY01205. Range: 0.078-5 ng/mL.