

For Research Use Only

COPA Recombinant antibody

Catalog Number:83089-1-RR



Basic Information

Catalog Number: 83089-1-RR	GenBank Accession Number: NM_004371	Purification Method: Protein A purification
Size: 1000 ug/ml	GeneID (NCBI): 1314	CloneNo.: 230361G2
Source: Rabbit	UNIPROT ID: P53621	Recommended Dilutions: WB 1:2000-1:10000 IHC 1:250-1:1000 IF/ICC 1:125-1:500
Isotype: IgG	Full Name: coatomer protein complex, subunit alpha	
Immunogen Catalog Number: AG34207	Calculated MW: 138 kDa	
	Observed MW: 150 kDa	

Applications

Tested Applications:
WB, IHC, IF/ICC, FC (Intra), ELISA

Species Specificity:
human, mouse

Note-IHC: suggested antigen retrieval with TE buffer pH 9.0; (*) Alternatively, antigen retrieval may be performed with citrate buffer pH 6.0

Positive Controls:

WB : HeLa cells, Jurkat cells, NIH/3T3 cells, MCF-7 cells, C2C12 cells

IHC : mouse liver tissue, human stomach tissue

IF/ICC : HeLa cells,

Background Information

COPA, also named HEP-COP and Alpha-COP, is coatomer subunit alpha. The coatomer is a cytosolic protein complex that binds to dilysine motifs and reversibly associates with Golgi non-clathrin-coated vesicles, which further mediate biosynthetic protein transport from the ER, via the Golgi up to the trans Golgi network. Coatomer complex is required for budding from Golgi membranes, and is essential for the retrograde Golgi-to-ER transport of dilysine-tagged proteins.

Storage

Storage:
Store at -20°C. Stable for one year after shipment.
Storage Buffer:
PBS with 0.02% sodium azide and 50% glycerol pH 7.3.
Aliquoting is unnecessary for -20°C storage

For technical support and original validation data for this product please contact:

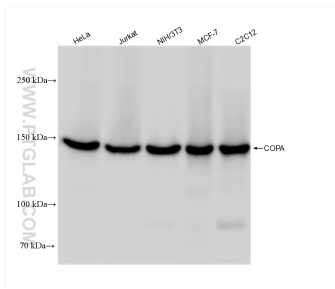
T: 4006900926

E: Proteintech-CN@ptglab.com

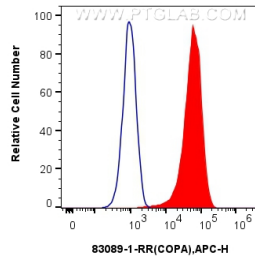
W: ptgcn.com

This product is exclusively available under Proteintech Group brand and is not available to purchase from any other manufacturer.

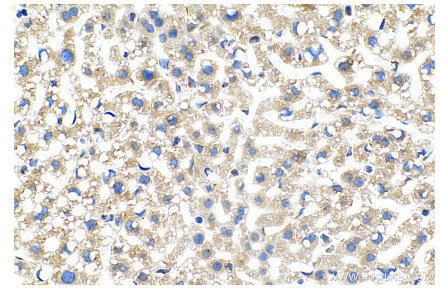
Selected Validation Data



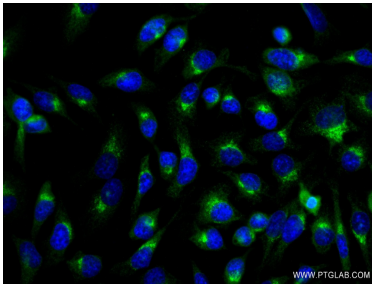
Various lysates were subjected to SDS PAGE followed by western blot with 83089-1-RR (COPA antibody) at dilution of 1:5000 incubated at room temperature for 1.5 hours.



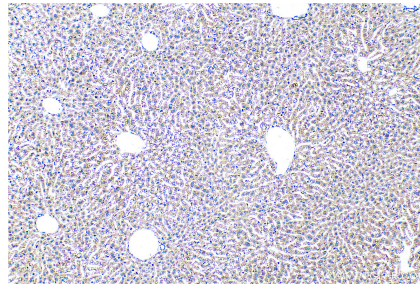
1×10^6 HeLa cells were intracellularly stained with 0.25 μ g Anti-Human COPA (83089-1-RR, Clone:230361G2) and APC-Conjugated AffiniPure Goat Anti-Rabbit IgG(H+L) (red), or 0.25 μ g Rabbit IgG control Rabbit PolyAb (30000-0-AP) (blue). Cells were fixed with 4% PFA and permeabilized with Flow Cytometry Perm Buffer (PF00011-C).



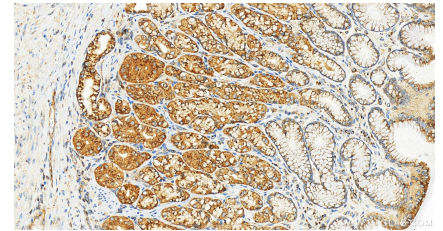
Immunohistochemical analysis of paraffin-embedded mouse liver tissue slide using 83089-1-RR (COPA antibody) at dilution of 1:500 (under 40x lens). Heat mediated antigen retrieval with Tris-EDTA buffer (pH 9.0).



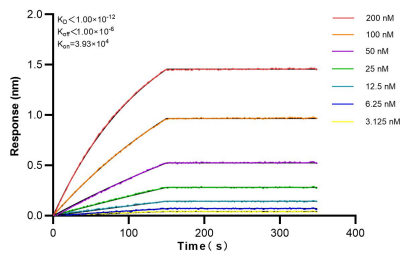
Immunofluorescent analysis of (-20°C Ethanol) fixed HeLa cells using COPA antibody (83089-1-RR, Clone: 230361G2) at dilution of 1:250 and CoraLite@488-Conjugated AffiniPure Goat Anti-Rabbit IgG(H+L) (SA00013-2).



Immunohistochemical analysis of paraffin-embedded mouse liver tissue slide using 83089-1-RR (COPA antibody) at dilution of 1:500 (under 10x lens). Heat mediated antigen retrieval with Tris-EDTA buffer (pH 9.0).



Immunohistochemical analysis of paraffin-embedded human normal stomach slide using 83089-1-RR (COPA antibody) at dilution of 1:1000 (under 20x lens). Heat mediated antigen retrieval with Tris-EDTA buffer (pH 9.0).



Biolayer interferometry (BLI) kinetic assays of 83089-1-RR against Human COPA were performed. The affinity constant is below 1 pM.