

For Research Use Only

NRF1/nuclear respiratory factor 1 Recombinant antibody



Catalog Number:83092-1-RR

Basic Information

Catalog Number: 83092-1-RR	GenBank Accession Number: BC016925	Purification Method: Protein A purification
Size: 1000 µg/ml	GeneID (NCBI): 4899	CloneNo.: 230394B1
Source: Rabbit	UNIPROT ID: Q16656	Recommended Dilutions: WB 1:2000-1:10000 IF 1:150-1:600
Isotype: IgG	Full Name: nuclear respiratory factor 1	
Immunogen Catalog Number: AG3172	Calculated MW: 522 aa, 56 kDa	
	Observed MW: 70 kDa	

Applications

Tested Applications: FC, IF/ICC, WB, ELISA	Positive Controls: WB : HeLa cells, Jurkat cells, RAW 264.7 cells, NIH/3T3 cells, U2OS cells IF : HepG2 cells,
Species Specificity: Human, mouse	

Background Information

NRF1, also named as Alpha-pal and NRF-1, belongs to the NRF1/Ewg family. It is a transcription factor that activates the expression of the EIF2S1 (EIF2-alpha) gene. NRF1 is implicated in the control of nuclear genes required for respiration, heme biosynthesis, and mitochondrial DNA transcription and replication. It plays a critical role in regulating the expression of many antioxidant response element (ARE)-dependent genes. NRF1 exists various isoforms and long isoform is about 67 kDa and short isoform is about 45 kDa.

Storage

Storage:
Store at -20°C. Stable for one year after shipment.
Storage Buffer:
PBS with 0.02% sodium azide and 50% glycerol pH 7.3.
Aliquoting is unnecessary for -20°C storage

For technical support and original validation data for this product please contact:

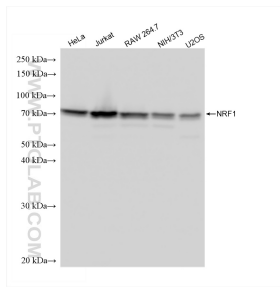
T: 4006900926

E: Proteintech-CN@ptglab.com

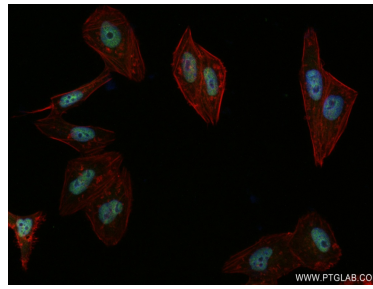
W: ptgcn.com

This product is exclusively available under Proteintech Group brand and is not available to purchase from any other manufacturer.

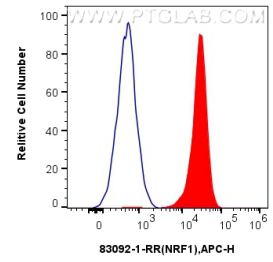
Selected Validation Data



Various lysates were subjected to SDS PAGE followed by western blot with 83092-1-RR (NRF1 antibody) at dilution of 1:5000 incubated at room temperature for 1.5 hours.



Immunofluorescent analysis of (4% PFA) fixed HepG2 cells using NRF1/nuclear respiratory factor 1 antibody (83092-1-RR, Clone: 230394B1) at dilution of 1:300 and CoraLite®488-Conjugated AffiniPure Goat Anti-Rabbit IgG(H+L) (SA00013-2), CL594-Phalloidin (red).



1x10⁶ HEK-293T cells were intracellularly stained with 0.25 ug Anti-Human NRF1 (83092-1-RR, Clone:230394B1) and APC-Conjugated AffiniPure Goat Anti-Rabbit IgG(H+L)(red), or 0.25 ug Rabbit IgG control Rabbit PolyAb (30000-0-AP) (blue). Cells were fixed and permeabilized with True-Nuclear Transcription Factor Buffer Set.