

For Research Use Only

CLPX Recombinant antibody

Catalog Number: 83097-1-RR **Featured Product**



Basic Information

Catalog Number:

83097-1-RR

Size:

1000 ug/ml

Source:

Rabbit

Isotype:

IgG

Immunogen Catalog Number:

AG34213

GenBank Accession Number:

NM_006660

GeneID (NCBI):

10845

UNIPROT ID:

O76031

Full Name:

ClpX caseinolytic peptidase X homolog (E. coli)

Calculated MW:

69 kDa

Observed MW:

63 kDa

Purification Method:

Protein A purification

CloneNo.:

230346H1

Recommended Dilutions:

WB 1:2000-1:10000

IHC 1:50-1:500

Applications

Tested Applications:

WB, IHC, FC (Intra), ELISA

Species Specificity:

human, mouse, rat

Note-IHC: suggested antigen retrieval with TE buffer pH 9.0; (*) Alternatively, antigen retrieval may be performed with citrate buffer pH 6.0

Positive Controls:

WB: HepG2 cells, A549 cells, HeLa cells, K-652 cells, HT-1080 cells, Saos-2 cells

IHC: human liver tissue, mouse stomach tissue, rat testis tissue

Background Information

Storage

Storage:

Store at -20°C. Stable for one year after shipment.

Storage Buffer:

PBS with 0.02% sodium azide and 50% glycerol pH 7.3.

Aliquoting is unnecessary for -20°C storage

For technical support and original validation data for this product please contact:

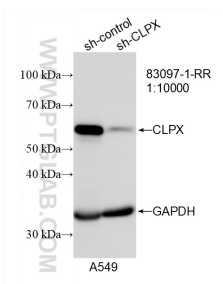
T: 4006900926

E: Proteintech-CN@ptglab.com

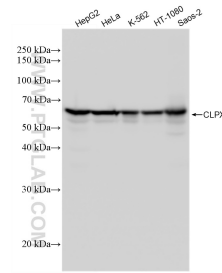
W: ptgcn.com

This product is exclusively available under Proteintech Group brand and is not available to purchase from any other manufacturer.

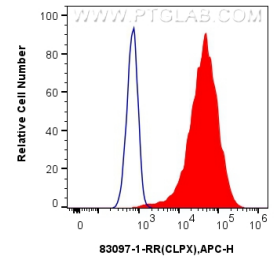
Selected Validation Data



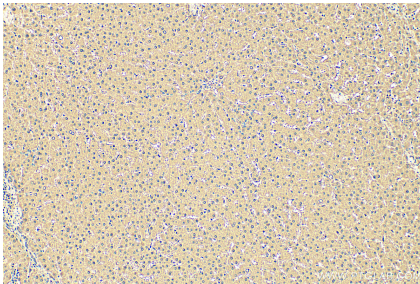
WB result of CLPX antibody (83097-1-RR; 1:30000; incubated at room temperature for 1.5 hours) with sh-Control and sh-CLPX transfected A549 cells.



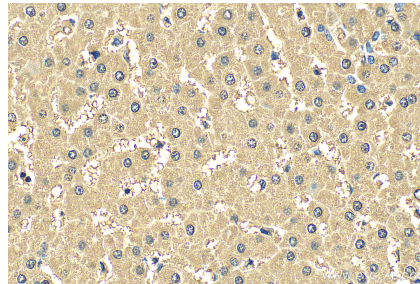
Various lysates were subjected to SDS PAGE followed by western blot with 83097-1-RR (CLPX antibody) at dilution of 1:5000 incubated at room temperature for 1.5 hours.



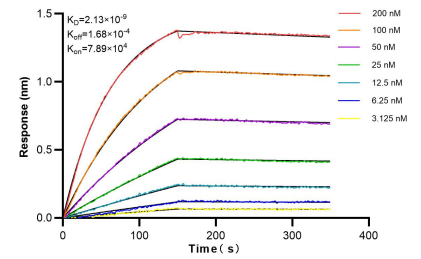
1×10^6 HeLa cells were intracellularly stained with 0.25 μ g Anti-Human CLPX (83097-1-RR, Clone:230346H1) and APC-Conjugated AffiniPure Goat Anti-Rabbit IgG(H+L)(red), or 0.25 μ g Rabbit IgG control Rabbit PolyAb (30000-0-AP) (blue). Cells were fixed with 4% PFA and permeabilized with Flow Cytometry Perm Buffer (PF00011-C).



Immunohistochemical analysis of paraffin-embedded human liver tissue slide using 83097-1-RR (CLPX antibody) at dilution of 1:200 (under 10x lens). Heat mediated antigen retrieval with Tris-EDTA buffer (pH 9.0).



Immunohistochemical analysis of paraffin-embedded human liver tissue slide using 83097-1-RR (CLPX antibody) at dilution of 1:200 (under 40x lens). Heat mediated antigen retrieval with Tris-EDTA buffer (pH 9.0).



Biolayer interferometry (BLI) kinetic assays of 83097-1-RR against Human CLPX were performed. The affinity constant is 2.13 nM.