

For Research Use Only

CLPX Recombinant antibody, PBS Only (Capture/Detector)

Catalog Number:83097-2-PBS



Basic Information

Catalog Number: 83097-2-PBS	GenBank Accession Number: NM_006660	Purification Method: Protein A purification
Size: 1mg/ml	GeneID (NCBI): 10845	CloneNo.: 230346B8
Source: Rabbit	UNIPROT ID: O76031	
Isotype: IgG	Full Name: ClpX caseinolytic peptidase X homolog (E. coli)	
Immunogen Catalog Number: AG34213	Calculated MW: 69 kDa	

Applications

Tested Applications:
Cytometric bead array, Sandwich ELISA, Indirect ELISA, Sample test

Species Specificity:
human

Background Information

Storage

Storage:
Store at -80°C.
The product is shipped with ice packs. Upon receipt, store it immediately at -80°C

Storage Buffer:
PBS Only

For technical support and original validation data for this product please contact:

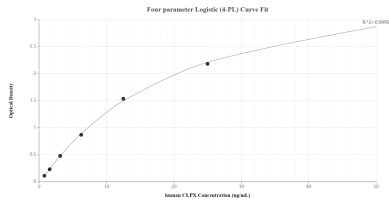
T: 4006900926

E: Proteintech-CN@ptglab.com

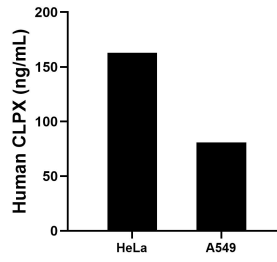
W: ptgcn.com

This product is exclusively available under Proteintech Group brand and is not available to purchase from any other manufacturer.

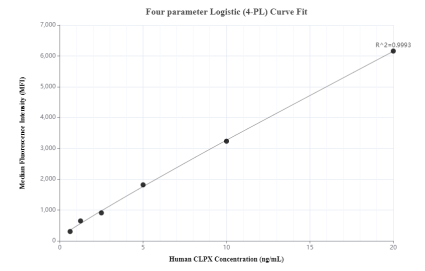
Selected Validation Data



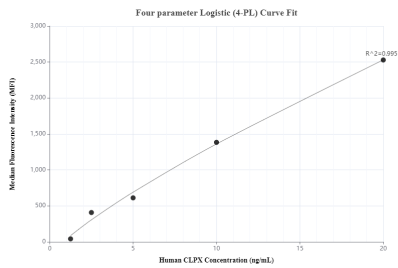
Sandwich ELISA standard curve of MP00277-3, Human CLPX Recombinant Matched Antibody Pair - PBS only. 83097-2-PBS was coated to a plate as the capture antibody and incubated with serial dilutions of standard Ag34213. 83097-1-PBS was HRP conjugated as the detection antibody. Range: 0.78-50 ng/mL



The mean CLPX concentration was determined to be 163.0 ng/mL in HeLa cell extract based on a 1.2 mg/mL extract load and 80.9 ng/mL in A549 cell extract based on a 1.0 mg/mL extract load.



Cytometric bead array standard curve of MP00277-1, CLPX Recombinant Matched Antibody Pair, PBS Only. Capture antibody: 83097-1-PBS. Detection antibody: 83097-2-PBS. Standard: Ag34213. Range: 0.625-20 ng/mL



Cytometric bead array standard curve of MP00277-2, CLPX Recombinant Matched Antibody Pair, PBS Only. Capture antibody: 83097-3-PBS. Detection antibody: 83097-2-PBS. Standard: Ag34213. Range: 0.625-20 ng/mL