

For Research Use Only

# NEDD4 Recombinant antibody, PBS Only



Catalog Number: 83112-1-PBS

## Basic Information

**Catalog Number:**

83112-1-PBS

**Size:**

1mg/ml

**Source:**

Rabbit

**Isotype:**

IgG

**Immunogen Catalog Number:**

AG16291

**GenBank Accession Number:**

BC152452

**GeneID (NCBI):**

4734

**UNIPROT ID:**

P46934

**Full Name:**

neural precursor cell expressed,  
developmentally down-regulated 4

**Calculated MW:**

1319 aa, 149 kDa

**Observed MW:**

115 kDa

**Purification Method:**

Protein A purification

**CloneNo.:**

230478F1

## Applications

**Tested Applications:**

WB, IP, Indirect ELISA

**Species Specificity:**

Human, Mouse, Rat

## Background Information

NEDD4 and similar proteins discovered subsequently became a family of HECT ligases, comprising 9 human proteins including NEDD4, NEDD4-2 (NEDD4L), ITCH, SMURF1, SMURF2, WWP1, WWP2, NEDL1 and NEDL2. NEDD4 is a highly evolutionarily conserved protein from yeast to man, and was initially cloned as a highly expressed gene in the early embryonic brain. NEDD4 is frequently overexpressed in many different types of cancer, and decreased levels of NEDD4 can also be associated with cancer. It can be a potential therapeutic target for the treatment of human cancer. (PMID: 25527121). The human NEDD4 gene is located on chromosome 15q21.3 and comprises 30 exons (HGNC:7727) shown to encode a ~120 kDa protein. Otherwise there is a 75 kDa isoform in addition to full length NEDD4 (PMID: 24907641).

## Storage

**Storage:**

Store at -80°C.

**Storage Buffer:**

PBS Only

For technical support and original validation data for this product please contact:

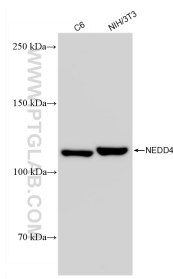
T: 4006900926

E: [Proteintech-CN@ptglab.com](mailto:Proteintech-CN@ptglab.com)

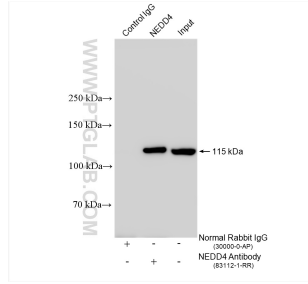
W: [ptgcn.com](http://ptgcn.com)

This product is exclusively available under Proteintech Group brand and is not available to purchase from any other manufacturer.

## Selected Validation Data



Various lysates were subjected to SDS PAGE followed by western blot with 83112-1-RR (NEDD4 antibody) at dilution of 1:5000 incubated at room temperature for 1.5 hours. This data was developed using the same antibody clone with 83112-1-PBS in a different storage buffer formulation.



IP result of anti-NEDD4 (IP:83112-1-RR, 4ug; Detection:83112-1-RR 1:1000) with NIH/3T3 cells lysate 1505 ug. This data was developed using the same antibody clone with 83112-1-PBS in a different storage buffer formulation.