

For Research Use Only

CELSR2 Recombinant antibody, PBS Only



Catalog Number: 83115-1-PBS

Basic Information

Catalog Number: 83115-1-PBS	GenBank Accession Number: NM_001408	Purification Method: Protein A purification
Size: 1 mg/ml	GeneID (NCBI): 1952	CloneNo.: 230319H5
Source: Rabbit	UNIPROT ID: Q9HCU4	
Isotype: IgG	Full Name: cadherin, EGF LAG seven-pass G-type receptor 2 (flamingo homolog, Drosophila)	
	Calculated MW: 318 kDa	

Applications

Tested Applications:
IF, Indirect ELISA

Species Specificity:
Human

Background Information

CELSR2, also named CDHF10, EGFL2, KIAA0279, and MEGF3, belongs to the G-protein coupled receptor 2 family and LN-TM7 subfamily. It is a receptor that may be important in cell/cell signaling during nervous system formation.

Storage

Storage:
Store at -80°C.

Storage Buffer:
PBS Only

For technical support and original validation data for this product please contact:

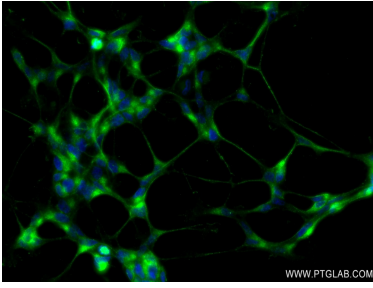
T: 4006900926

E: Proteintech-CN@ptglab.com

W: ptgcn.com

This product is exclusively available under Proteintech Group brand and is not available to purchase from any other manufacturer.

Selected Validation Data



Immunofluorescent analysis of (4% PFA) fixed SH-SY5Y cells using CELSR2 antibody (83115-1-RR, Clone: 230319H5) at dilution of 1:250 and CoraLite®488-Conjugated AffiniPure Goat Anti-Rabbit IgG(H+L) (SA00013-2). This data was developed using the same antibody clone with 83115-1-PBS in a different storage buffer formulation.