

For Research Use Only

# CELSR2 Recombinant antibody

Catalog Number: 83115-1-RR



## Basic Information

<b>Catalog Number:</b> 83115-1-RR	<b>GenBank Accession Number:</b> NM_001408	<b>Purification Method:</b> Protein A purification
<b>Size:</b> 1000 µg/ml	<b>GeneID (NCBI):</b> 1952	<b>CloneNo.:</b> 230319H5
<b>Source:</b> Rabbit	<b>UNIPROT ID:</b> Q9HCU4	<b>Recommended Dilutions:</b> IF 1:125-1:500
<b>Isotype:</b> IgG	<b>Full Name:</b> cadherin, EGF LAG seven-pass G-type receptor 2 (flamingo homolog, Drosophila)	
	<b>Calculated MW:</b> 318 kDa	

## Applications

<b>Tested Applications:</b> IF/ICC, ELISA	<b>Positive Controls:</b> IF : SH-SY5Y cells,
<b>Species Specificity:</b> Human	

## Background Information

CELSR2, also named CDHF10, EGFL2, KIAA0279, and MEGF3, belongs to the G-protein coupled receptor 2 family and LN-TM7 subfamily. It is a receptor that may be important in cell/cell signaling during nervous system formation.

## Storage

**Storage:**  
Store at -20°C. Stable for one year after shipment.  
**Storage Buffer:**  
PBS with 0.02% sodium azide and 50% glycerol pH 7.3.  
**Aliquoting is unnecessary for -20°C storage**

For technical support and original validation data for this product please contact:

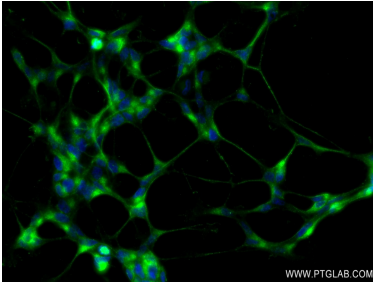
T: 4006900926

E: [Proteintech-CN@ptglab.com](mailto:Proteintech-CN@ptglab.com)

W: [ptgcn.com](http://ptgcn.com)

**This product is exclusively available under Proteintech Group brand and is not available to purchase from any other manufacturer.**

## Selected Validation Data



Immunofluorescent analysis of (4% PFA) fixed SH-SY5Y cells using CELSR2 antibody (83115-1-RR, Clone: 230319H5 ) at dilution of 1:250 and CoraLite®488-Conjugated AffiniPure Goat Anti-Rabbit IgG(H+L) (SA00013-2).