

For Research Use Only

NSD3 Recombinant antibody

Catalog Number:83116-2-RR



Basic Information

Catalog Number:

83116-2-RR

Size:

1000 ug/ml

Source:

Rabbit

Isotype:

IgG

Immunogen Catalog Number:

AG1894

GenBank Accession Number:

BC012059

GeneID (NCBI):

54904

UNIPROT ID:

Q9BZ95

Full Name:

Wolf-Hirschhorn syndrome candidate

1-like 1

Calculated MW:

1437 aa, 162 kDa

Observed MW:

160-170 kDa, 68-72 kDa

Purification Method:

Protein A purification

CloneNo.:

230499C2

Recommended Dilutions:

WB 1:5000-1:50000

IHC 1:200-1:800

Applications

Tested Applications:

WB, IHC, FC (Intra), ELISA

Species Specificity:

human

Note-IHC: suggested antigen retrieval with TE buffer pH 9.0; (*) Alternatively, antigen retrieval may be performed with citrate buffer pH 6.0

Positive Controls:

WB : A549 cells, HEK-293 cells, HeLa cells, K-562 cells

IHC : human lung squamous cell carcinoma tissue,

Background Information

WHSC1L1, also named as NSD3 and DC28, belongs to the histone-lysine methyltransferase family and SET2 subfamily. It is histone methyltransferase. WHSC1L1 is a potently transforming oncogenes based on the number of altered phenotypes expressed by the cells. It contains a PWWP-domain that is a methyl-lysine recognition motif involved in histone code modification and epigenetic regulation of gene expression. Knockdown of WHSC1L1 in 8p11-12-amplified breast cancer cells resulted in profound loss of growth and survival of these cells. (PMID: 20940404). This antibody recognize the long isoform (160-170 kDa) and short isoform (68-72 kDa).

Storage

Storage:

Store at -20°C. Stable for one year after shipment.

Storage Buffer:

PBS with 0.02% sodium azide and 50% glycerol pH 7.3.

Aliquoting is unnecessary for -20°C storage

For technical support and original validation data for this product please contact:

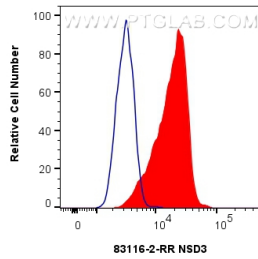
T: 4006900926

E: Proteintech-CN@ptglab.com

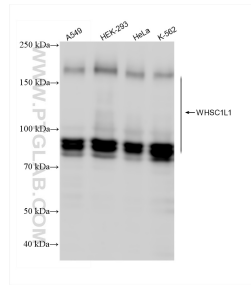
W: ptgcn.com

This product is exclusively available under Proteintech Group brand and is not available to purchase from any other manufacturer.

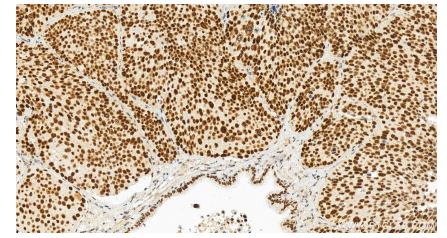
Selected Validation Data



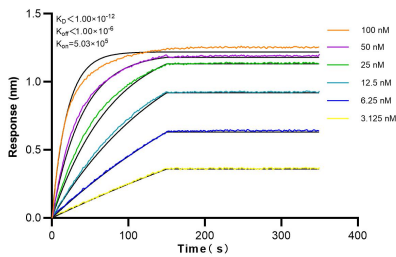
1x10⁶ HeLa cells were intracellularly stained with 0.4 ug NSD3 Recombinant antibody (83116-2-RR, Clone:230499C2) and CoraLite®488-Conjugated AffiniPure Goat Anti-Rabbit IgG(H+L) (SA00013-2) (red), or 0.4 ug Isotype Control (blue). Cells were fixed and permeabilized with Transcription Factor Staining Buffer Kit (PF00011).



Various lysates were subjected to SDS PAGE followed by western blot with 83116-2-RR (WHSC1L1 antibody) at dilution of 1:10000 incubated at room temperature for 1.5 hours.



Immunohistochemical analysis of paraffin-embedded human lung squamous cell carcinoma tissue slide using 83116-2-RR (NSD3 antibody) at dilution of 1:400 (under 20x lens). Heat mediated antigen retrieval with Tris-EDTA buffer (pH 9.0).



Biolayer interferometry (BLI) kinetic assays of 83116-2-RR against Human NSD3 were performed. The affinity constant is below 1 pM.