

For Research Use Only

# NLRP12 Recombinant antibody, PBS Only

Catalog Number: 83123-6-PBS



## Basic Information

<b>Catalog Number:</b> 83123-6-PBS	<b>GenBank Accession Number:</b> BC028069	<b>Purification Method:</b> Protein A purification
<b>Size:</b> 1 mg/ml	<b>GeneID (NCBI):</b> 91662	<b>CloneNo.:</b> 241838E11
<b>Source:</b> Rabbit	<b>UNIPROT ID:</b> P59046	
<b>Isotype:</b> IgG	<b>Full Name:</b> NLR family, pyrin domain containing 12	
<b>Immunogen Catalog Number:</b> AG34281	<b>Calculated MW:</b> 1061 aa, 120 kDa	
	<b>Observed MW:</b> 95-110 kDa	

## Applications

**Tested Applications:**  
WB, Indirect ELISA

**Species Specificity:**  
human, mouse

## Background Information

NACHT, LRR and PYD domains-containing protein 12 (NLRP12) is also named as Monarch-1, NALP12, PYPAF7 and RNO. NLRP12 is an essential cytosolic sensor for heme plus PAMPs-mediated PANoptosis, inflammation, and pathology (PMID: 37267949). NLRP12 drives inflammasome and PANoptosome activation, cell death, and inflammation in response to heme plus PAMPs or TNF. TLR2/4-mediated signaling through IRF1 induced Nlrp12 expression, which led to inflammasome formation to induce maturation of IL-1 $\beta$  and IL-18 (PMID: 37267949). NLRP12, a pyrin-containing NLR protein, is a negative regulator of innate immune activation and type I interferon (IFN-I) production (PMID: 36719379).

## Storage

**Storage:**  
Store at -80°C.  
**The product is shipped with ice packs. Upon receipt, store it immediately at -80°C**

**Storage Buffer:**  
PBS Only

For technical support and original validation data for this product please contact:

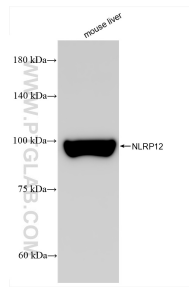
T: 4006900926

E: [Proteintech-CN@ptglab.com](mailto:Proteintech-CN@ptglab.com)

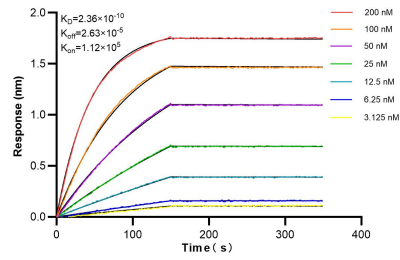
W: [ptgcn.com](http://ptgcn.com)

**This product is exclusively available under Proteintech Group brand and is not available to purchase from any other manufacturer.**

## Selected Validation Data



Mouse liver tissue was subjected to SDS PAGE followed by western blot with 83123-6-RR (NLRP12 antibody) at dilution of 1:12000 incubated at room temperature for 1.5 hours. This data was developed using the same antibody clone with 83123-6-PBS in a different storage buffer formulation.



Biolayer interferometry (BLI) kinetic assays of 83123-6-RR against Human NLRP12 were performed. The affinity constant is 0.236 nM.