

For Research Use Only

# MDM1 Recombinant antibody

Catalog Number: 83141-2-RR



## Basic Information

<b>Catalog Number:</b> 83141-2-RR	<b>GenBank Accession Number:</b> BC028355	<b>Purification Method:</b> Protein A purification
<b>Size:</b> 1000 µg/ml	<b>GeneID (NCBI):</b> 56890	<b>CloneNo.:</b> 230425E10
<b>Source:</b> Rabbit	<b>UNIPROT ID:</b> Q8TC05	<b>Recommended Dilutions:</b> WB 1:5000-1:50000 IHC 1:200-1:800
<b>Isotype:</b> IgG	<b>Full Name:</b> Mdm1 nuclear protein homolog (mouse)	
<b>Immunogen Catalog Number:</b> AG10541	<b>Calculated MW:</b> 81 kDa	
	<b>Observed MW:</b> 102 kDa	

## Applications

### Tested Applications:

WB, IHC, ELISA

### Species Specificity:

human, mouse

**Note-IHC: suggested antigen retrieval with TE buffer pH 9.0; (\*) Alternatively, antigen retrieval may be performed with citrate buffer pH 6.0**

### Positive Controls:

WB : HEK-293 cells, Raji cells, PC-3 cells, mouse testis tissue

IHC : mouse testis tissue,

## Background Information

Mdm1 was upregulated during ciliogenesis in multiciliated tracheal epithelial cells and localized to centrioles and cilia when transfected into NIH/3T3 cells. Mdm1 is a microtubule-binding protein that inhibits centrosome duplication when overexpressed. Proteomic analysis revealed that Mdm1 was also detected in the mouse photoreceptor sensory cilium complex and the outer segment (OS) of photoreceptor cells in the retina, suggesting that Mdm1 might be involved in the regulation of the functions and structure of the centrosome, as well as cilia. (PMID: 36171205)

## Storage

### Storage:

Store at -20°C. Stable for one year after shipment.

### Storage Buffer:

PBS with 0.02% sodium azide and 50% glycerol pH 7.3.

Aliquoting is unnecessary for -20°C storage

For technical support and original validation data for this product please contact:

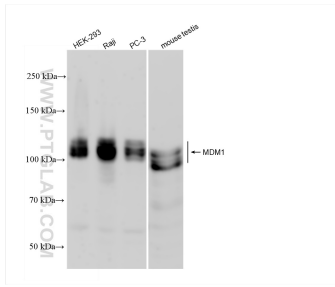
T: 4006900926

E: Proteintech-CN@ptglab.com

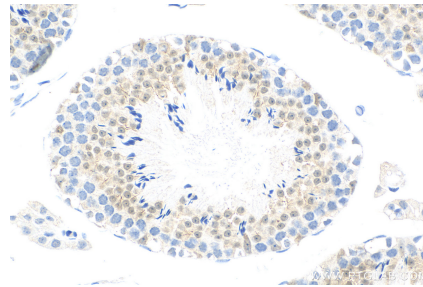
W: ptgcn.com

**This product is exclusively available under Proteintech Group brand and is not available to purchase from any other manufacturer.**

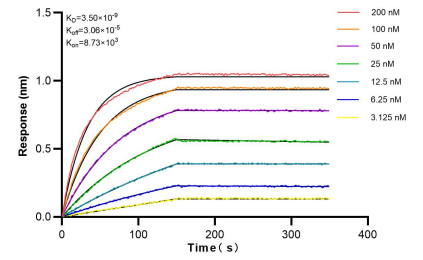
## Selected Validation Data



Various lysates were subjected to SDS PAGE followed by western blot with 83141-2-RR (MDM1 antibody) at dilution of 1:10000 incubated at room temperature for 1.5 hours.



Immunohistochemical analysis of paraffin-embedded mouse testis tissue slide using 83141-2-RR (MDM1 antibody) at dilution of 1:400 (under 40x lens). Heat mediated antigen retrieval with Tris-EDTA buffer (pH 9.0).



Biolayer interferometry (BLI) kinetic assays of 83141-2-RR against Human MDM1 were performed. The affinity constant is 3.50 nM.