

For Research Use Only

PPFIA3 Recombinant antibody, PBS Only (Capture)



Catalog Number: 83142-4-PBS

Basic Information

Catalog Number:

83142-4-PBS

Size:

1mg/ml

Source:

Rabbit

Isotype:

IgG

Immunogen Catalog Number:

AG1971

GenBank Accession Number:

BC021255

GeneID (NCBI):

8541

UNIPROT ID:

O75145

Full Name:

protein tyrosine phosphatase, receptor type, f polypeptide (PTPRF), interacting protein (liprin), alpha 3

Calculated MW:

1194 aa, 133 kDa

Purification Method:

Protein A purification

CloneNo.:

230459F6

Applications

Tested Applications:

WB, IP, Cytometric bead array, Indirect ELISA

Species Specificity:

human, mouse, rat

Background Information

Storage

Storage:

Store at -80°C.

The product is shipped with ice packs. Upon receipt, store it immediately at -80°C

Storage Buffer:

PBS Only

For technical support and original validation data for this product please contact:

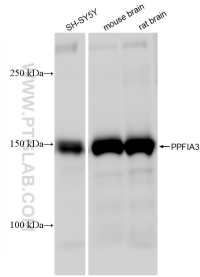
T: 4006900926

E: Proteintech-CN@ptglab.com

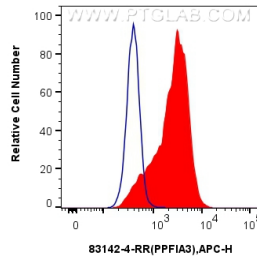
W: ptgcn.com

This product is exclusively available under Proteintech Group brand and is not available to purchase from any other manufacturer.

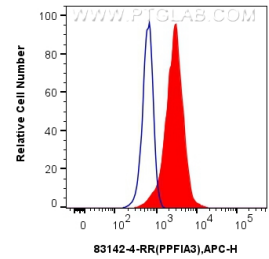
Selected Validation Data



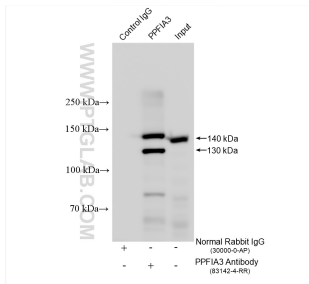
Various lysates were subjected to SDS PAGE followed by western blot with 83142-4-RR (PPFIA3 antibody) at dilution of 1:10000 incubated at room temperature for 1.5 hours. This data was developed using the same antibody clone with 83142-4-PBS in a different storage buffer formulation.



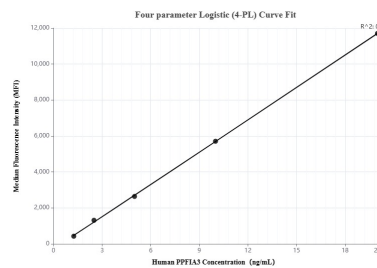
1x10⁶ HEK-293 cells were intracellularly stained with 0.25 ug PPFIA3 Recombinant antibody (83142-4-RR, Clone:230459F6) and APC-Conjugated AffiniPure Goat Anti-Rabbit IgG(H+L)(red), or 0.25 ug Rabbit IgG control Rabbit PolyAb (30000-O-AP) (blue). Cells were fixed with 4% PFA and permeabilized with Flow Cytometry Perm Buffer (PF00011-C). This data was developed using the same antibody clone with 83142-4-PBS in a different storage buffer formulation.



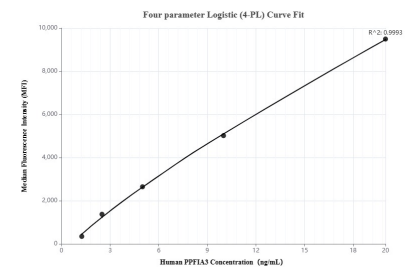
1x10⁶ U-251 cells were intracellularly stained with 0.25 ug PPFIA3 Recombinant antibody (83142-4-RR, Clone:230459F6) and APC-Conjugated AffiniPure Goat Anti-Rabbit IgG(H+L)(red), or 0.25 ug Rabbit IgG control Rabbit PolyAb (30000-O-AP) (blue). Cells were fixed with 4% PFA and permeabilized with Flow Cytometry Perm Buffer (PF00011-C). This data was developed using the same antibody clone with 83142-4-PBS in a different storage buffer formulation.



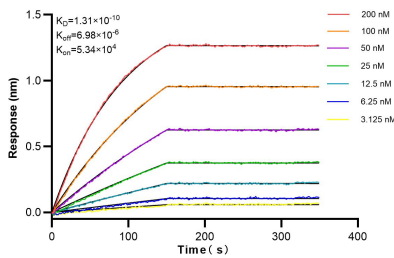
IP result of anti-PPFIA3 (IP:83142-4-RR, 4ug; Detection:83142-4-RR 1:4000) with mouse brain tissue lysate 2100 ug. This data was developed using the same antibody clone with 83142-4-PBS in a different storage buffer formulation.



Cytometric bead array standard curve of mPP00170-2, PPFIA3 Recombinant Matched Antibody Pair, PBS Only. Capture antibody: 83142-4-PBS. Detection antibody: 83142-3-PBS. Standard: Ag1971. Range: 1.25-20 ng/mL



Cytometric bead array standard curve of mPP00170-3, PPFIA3 Recombinant Matched Antibody Pair, PBS Only. Capture antibody: 83142-4-PBS. Detection antibody: 83142-2-PBS. Standard: Ag1971. Range: 1.25-20 ng/mL



Biolayer interferometry (BLI) kinetic assays of 83142-4-RR against Human PPFIA3 were performed. The affinity constant is 0.131 nM.