

For Research Use Only

TMEM165 Recombinant antibody, PBS Only (Detector)



Catalog Number: 83146-1-PBS

Basic Information

Catalog Number: 83146-1-PBS	GenBank Accession Number: BC003545	Purification Method: Protein A purification
Size: 1mg/ml	GeneID (NCBI): 55858	CloneNo.: 230517B1
Source: Rabbit	UNIPROT ID: Q9HC07	
Isotype: IgG	Full Name: transmembrane protein 165	
Immunogen Catalog Number: AG14362	Calculated MW: 324 aa, 35 kDa	

Applications

Tested Applications:
IF, Indirect ELISA, Cytometric bead array

Species Specificity:
Human

Background Information

Storage

Storage:
Store at -80°C.

Storage Buffer:
PBS Only

For technical support and original validation data for this product please contact:

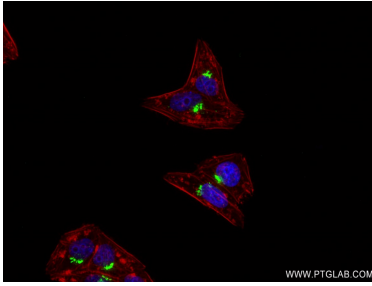
T: 4006900926

E: Proteintech-CN@ptglab.com

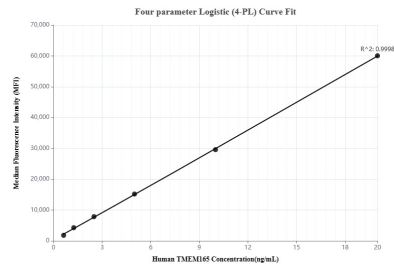
W: ptgcn.com

This product is exclusively available under Proteintech Group brand and is not available to purchase from any other manufacturer.

Selected Validation Data



Immunofluorescent analysis of (4% PFA) fixed HepG2 cells using TMEM165 antibody (83146-1-RR, Clone: 230517B1) at dilution of 1:400 and CoraLite@488-Conjugated AffiniPure Goat Anti-Mouse IgG(H+L) (SA00013-1), CL594-Phalloidin (red). This data was developed using the same antibody clone with 83146-1-PBS in a different storage buffer formulation.



Cytometric bead array standard curve of MP00217-2, TMEM165 Recombinant Matched Antibody Pair, PBS Only. Capture antibody: 83146-2-PBS. Detection antibody: 83146-1-PBS. Standard: Ag14362. Range: 0.625-20 ng/mL.