

For Research Use Only

# MCP-1 Recombinant antibody

Catalog Number: 83157-5-RR



## Basic Information

<b>Catalog Number:</b> 83157-5-RR	<b>GenBank Accession Number:</b> NM-011333	<b>Purification Method:</b> Protein A purification
<b>Size:</b> 1000 µg/ml	<b>GeneID (NCBI):</b> 20296	<b>CloneNo.:</b> 230483F11
<b>Source:</b> Rabbit	<b>Full Name:</b> chemokine (C-C motif) ligand 2	<b>Recommended Dilutions:</b> WB 1:2000-1:10000
<b>Isotype:</b> IgG	<b>Observed MW:</b> 16 kDa	

## Applications

<b>Tested Applications:</b> WB, ELISA	<b>Positive Controls:</b> WB : LPS and Brefeldin A treated RAW 264.7 cells,
<b>Species Specificity:</b> mouse	

## Background Information

Monocyte chemoattractant protein-1 (MCP-1/CCL2) is one of the key chemokines that regulate migration and infiltration of monocytes/macrophages. Both CCL2 and its receptor CCR2 have been demonstrated to be induced and involved in various diseases. Migration of monocytes from the blood stream across the vascular endothelium is required for routine immunological surveillance of tissues, as well as in response to inflammation.

## Storage

**Storage:**  
Store at -20°C. Stable for one year after shipment.  
**Storage Buffer:**  
PBS with 0.02% sodium azide and 50% glycerol pH 7.3.  
Aliquoting is unnecessary for -20°C storage

For technical support and original validation data for this product please contact:

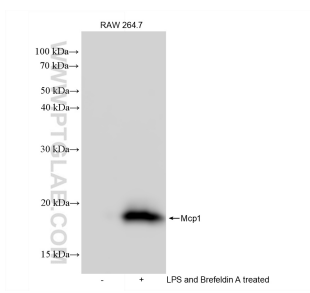
T: 4006900926

E: [Proteintech-CN@ptglab.com](mailto:Proteintech-CN@ptglab.com)

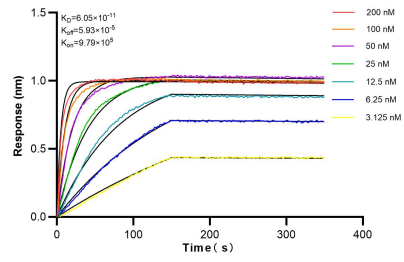
W: [ptgcn.com](http://ptgcn.com)

This product is exclusively available under Proteintech Group brand and is not available to purchase from any other manufacturer.

## Selected Validation Data



Un-treated, LPS and Brefeldin A treated RAW 264.7 cells were subjected to SDS PAGE followed by western blot with 83157-5-RR (Mcp1 antibody) at dilution of 1:5000 incubated at room temperature for 1.5 hours.



Biolayer interferometry (BLI) kinetic assays of 83157-5-RR against Mouse MCP-1 were performed. The affinity constant is 60.5 pM.