

For Research Use Only

# Mouse MCP-1/CCL2 Recombinant antibody, PBS Only (Capture)

Catalog Number:83157-6-PBS



## Basic Information

Catalog Number:

83157-6-PBS

Size:

1 mg/ml

Source:

Rabbit

Isotype:

IgG

GenBank Accession Number:

NM-011333

GeneID (NCBI):

20296

UNIPROT ID:

P10148

Full Name:

chemokine (C-C motif) ligand 2

Purification Method:

Protein A purification

CloneNo.:

230483B2

## Applications

Tested Applications:

Sandwich ELISA, Indirect ELISA, Sample test

Species Specificity:

mouse

## Background Information

### Storage

Storage:

Store at -80°C.

**The product is shipped with ice packs. Upon receipt, store it immediately at -80°C**

Storage Buffer:

PBS Only

For technical support and original validation data for this product please contact:

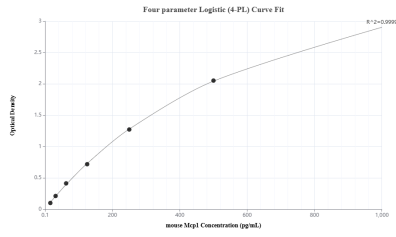
T: 4006900926

E: [Proteintech-CN@ptglab.com](mailto:Proteintech-CN@ptglab.com)

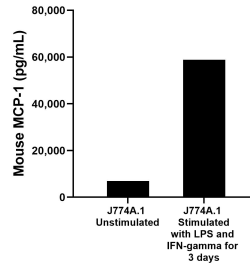
W: [ptgcn.com](http://ptgcn.com)

**This product is exclusively available under Proteintech Group brand and is not available to purchase from any other manufacturer.**

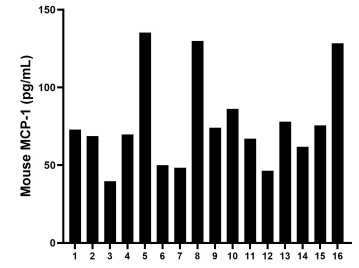
## Selected Validation Data



Sandwich ELISA standard curve of MP00168-4, Mouse MCP-1 Recombinant Matched Antibody Pair - PBS only. 83157-6-PBS was coated to a plate as the capture antibody and incubated with serial dilutions of standard Eg0427. 83157-4-PBS was HRP conjugated as the detection antibody. Range: 15.6-1000 pg/mL



J774A.1 mouse reticulum cell sarcoma macrophage cells ( $1 \times 10^6$  cells/mL) were cultured for 3 days in DMEM containing 10% fetal bovine serum. Cells were untreated or treated with 500 ng/mL recombinant mouse IFN- $\gamma$  and 10 ng/mL LPS. An aliquot of the cell culture supernatants were removed, assayed for mouse MCP-1, and measured 6,956.6 pg/mL and 58,869.9 pg/mL



Serum of sixteen mice was measured. The MCP-1 concentration of detected samples was determined to be 77.0 pg/mL with a range of 39.7 - 135.3 pg/mL