

For Research Use Only

# IFI35 Recombinant antibody

Catalog Number:83160-4-RR



## Basic Information

<b>Catalog Number:</b> 83160-4-RR	<b>GenBank Accession Number:</b> BC001356	<b>Purification Method:</b> Protein A purification
<b>Size:</b> 1000 ug/ml	<b>GeneID (NCBI):</b> 3430	<b>CloneNo.:</b> 240063E1
<b>Source:</b> Rabbit	<b>UNIPROT ID:</b> P80217	<b>Recommended Dilutions:</b> WB 1:5000-1:50000 IHC 1:200-1:800
<b>Isotype:</b> IgG	<b>Full Name:</b> interferon-induced protein 35	
<b>Immunogen Catalog Number:</b> AG34653	<b>Calculated MW:</b> 31 kDa	
	<b>Observed MW:</b> 31-35 kDa	

## Applications

### Tested Applications:

WB, IHC, ELISA

### Species Specificity:

human

**Note-IHC: suggested antigen retrieval with TE buffer pH 9.0; (\*) Alternatively, antigen retrieval may be performed with citrate buffer pH 6.0**

### Positive Controls:

WB : A549 cells, HeLa cells, MCF-7 cells, HepG2 cells, SW480 cells, Jurkat cells

IHC : human ovary cancer tissue,

## Background Information

IFI35 (interferon induced protein 35), also known as IFP35. It is expected to be located in cytoplasm, nucleus and extracellular space. The protein is expressed in a wide range of cell types, including fibroblasts, macrophages, and epithelial cells. Involved in several processes, including macrophage activation involved in immune response; positive regulation of defense response; and regulation of signal transduction. And the calculated molecular weight of IFI35 is 31 kDa.

## Storage

### Storage:

Store at -20°C. Stable for one year after shipment.

### Storage Buffer:

PBS with 0.02% sodium azide and 50% glycerol pH 7.3.

Aliquoting is unnecessary for -20°C storage

For technical support and original validation data for this product please contact:

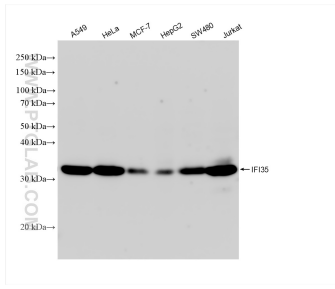
T: 4006900926

E: Proteintech-CN@ptglab.com

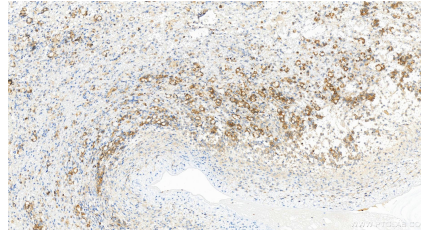
W: ptgcn.com

**This product is exclusively available under Proteintech Group brand and is not available to purchase from any other manufacturer.**

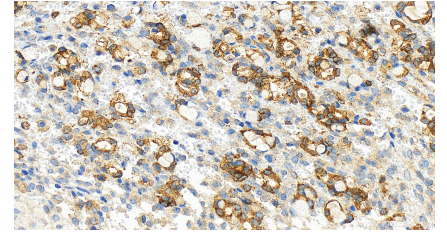
## Selected Validation Data



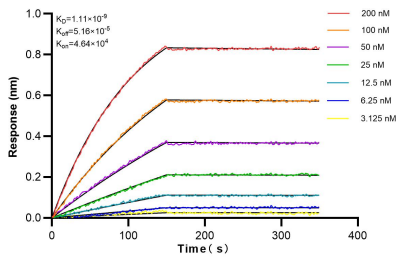
Various lysates were subjected to SDS PAGE followed by western blot with 83160-4-RR (IFI35 antibody) at dilution of 1:10000 incubated at room temperature for 1.5 hours.



Immunohistochemical analysis of paraffin-embedded human ovary cancer tissue slide using 83160-4-RR (IFI35 antibody) at dilution of 1:400 (under 20x lens). Heat mediated antigen retrieval with Tris-EDTA buffer (pH 9.0).



Immunohistochemical analysis of paraffin-embedded human ovary cancer tissue slide using 83160-4-RR (IFI35 antibody) at dilution of 1:400 (under 20x lens). Heat mediated antigen retrieval with Tris-EDTA buffer (pH 9.0).



Biolayer interferometry (BLI) kinetic assays of 83160-4-RR against Human IFI35 were performed. The affinity constant is 1.11 nM.