

For Research Use Only

# SMAD4 Recombinant antibody, PBS Only (Detector)

Catalog Number:83169-6-PBS



## Basic Information

Catalog Number: 83169-6-PBS	GenBank Accession Number: BC002379	Purification Method: Protein A purification
Size: 1 mg/ml	GeneID (NCBI): 4089	CloneNo.: 240026A4
Source: Rabbit	UNIPROT ID: Q13485	
Isotype: IgG	Full Name: SMAD family member 4	
Immunogen Catalog Number: AG0299	Calculated MW: 60 kDa	

## Applications

**Tested Applications:**  
Sandwich ELISA, Indirect ELISA, Sample test

**Species Specificity:**  
human

## Background Information

### Storage

**Storage:**  
Store at -80°C.  
**The product is shipped with ice packs. Upon receipt, store it immediately at -80°C**

**Storage Buffer:**  
PBS Only

For technical support and original validation data for this product please contact:

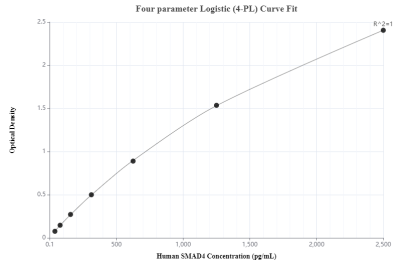
T: 4006900926

E: [Proteintech-CN@ptglab.com](mailto:Proteintech-CN@ptglab.com)

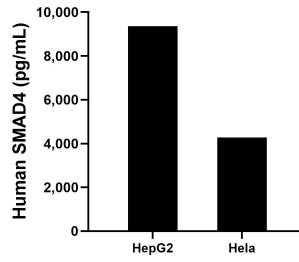
W: [ptgcn.com](http://ptgcn.com)

**This product is exclusively available under Proteintech Group brand and is not available to purchase from any other manufacturer.**

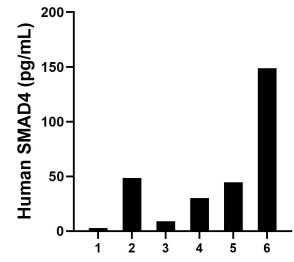
## Selected Validation Data



Sandwich ELISA standard curve of MP00267-4, Human SMAD4 Monoclonal Matched Antibody Pair - PBS only. 83169-5-PBS was coated to a plate as the capture antibody and incubated with serial dilutions of standard Ag0299. 83169-6-PBS was HRP conjugated as the detection antibody. Range: 39.1-2500 pg/mL



The mean human SMAD4 concentration was determined to be 9,362.0 pg/mL in HepG2 cell extract based on a 6.0 mg/mL extract load and 4,272.2 pg/mL in HL-60 cell extract based on a 3 mg/mL extract load.



Serum of sixteen individual healthy human donors were measured. The human SMAD4 concentration of detected samples was determined to be 47.3 pg/mL with a range of ND - 148.8 pg/mL.