

For Research Use Only

BBS13 Recombinant antibody, PBS Only (Capture/Detector)



Catalog Number: 83181-2-PBS

Basic Information

Catalog Number: 83181-2-PBS	GenBank Accession Number: BC010061	Purification Method: Protein A purification
Size: 1 mg/ml	GeneID (NCBI): 54903	CloneNo.: 240036E12
Source: Rabbit	UNIPROT ID: Q9NXB0	
Isotype: IgG	Full Name: Meckel syndrome, type 1	
Immunogen Catalog Number: AG9177	Calculated MW: 559 aa, 65 kDa	

Applications

Tested Applications:
FC, Indirect ELISA, Cytometric bead array

Species Specificity:
Human

Background Information

Storage

Storage:
Store at -80°C.

Storage Buffer:
PBS Only

For technical support and original validation data for this product please contact:

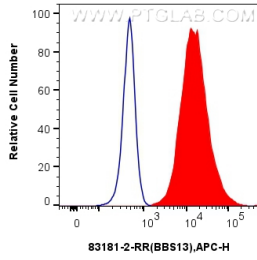
T: 4006900926

E: Proteintech-CN@ptglab.com

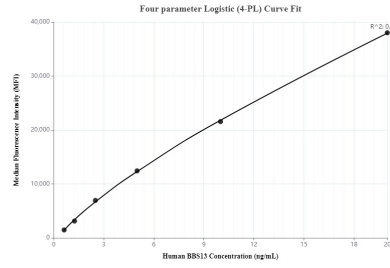
W: ptgcn.com

This product is exclusively available under Proteintech Group brand and is not available to purchase from any other manufacturer.

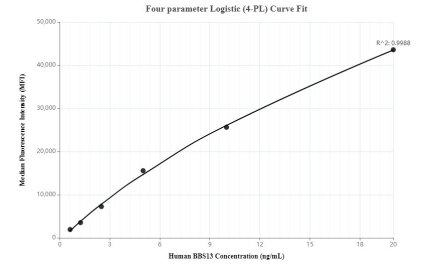
Selected Validation Data



1x10⁶ A549 cells were intracellularly stained with 0.25 ug Bbs13 Recombinant Antibody (83181-2-RR, Clone:240036E12) and APC-Conjugated AffiniPure Goat Anti-Rabbit IgG(H+L)(red), or 0.25 ug Rabbit IgG control Rabbit PolyAb (30000-0-AP) (blue). Cells were fixed with 4% PFA and permeabilized with Flow Cytometry Perm Buffer (PF00011-C). This data was developed using the same antibody clone with 83181-2-PBS in a different storage buffer formulation.



Cytometric bead array standard curve ofMP00270-1, BBS13 Recombinant Matched Antibody Pair - BSA and Azide free. Capture antibody: 83181-1-PBS. Detection antibody: 83181-2-PBS. Standard: Ag9177. Range: 0.625-20 ng/mL.



Cytometric bead array standard curve ofMP00270-2, BBS13 Recombinant Matched Antibody Pair - BSA and Azide free. Capture antibody: 83181-2-PBS. Detection antibody: 83181-3-PBS. Standard: Ag9177. Range: 0.625-20 ng/mL.