

For Research Use Only

KLF9 Recombinant antibody, PBS Only (Detector)



Catalog Number: 83183-4-PBS

Basic Information

Catalog Number: 83183-4-PBS	GenBank Accession Number: BC074880	Purification Method: Protein A purification
Size: 1mg/ml	GeneID (NCBI): 687	CloneNo.: 230436H2
Source: Rabbit	UNIPROT ID: Q13886	
Isotype: IgG	Full Name: Kruppel-like factor 9	
Immunogen Catalog Number: AG34411	Calculated MW: 27 kDa	

Applications

Tested Applications:
Cytometric bead array, Indirect ELISA, WB

Species Specificity:
human

Background Information

Storage

Storage:
Store at -80°C.
The product is shipped with ice packs. Upon receipt, store it immediately at -80°C

Storage Buffer:
PBS Only

For technical support and original validation data for this product please contact:

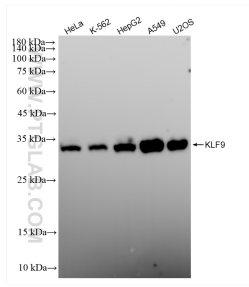
T: 4006900926

E: Proteintech-CN@ptglab.com

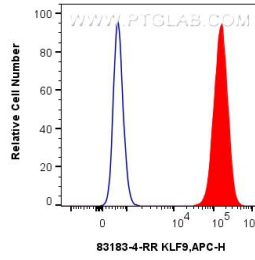
W: ptgcn.com

This product is exclusively available under Proteintech Group brand and is not available to purchase from any other manufacturer.

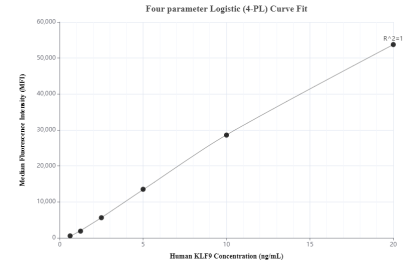
Selected Validation Data



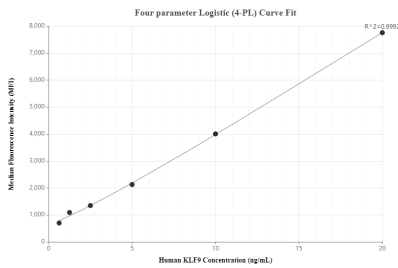
Various lysates were subjected to SDS PAGE followed by western blot with 83183-4-RR (KLF9 antibody) at dilution of 1:10000 incubated at room temperature for 1.5 hours. This data was developed using the same antibody clone with 83183-4-PBS in a different storage buffer formulation.



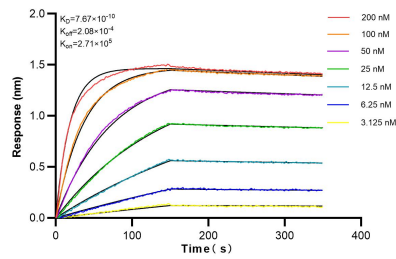
1×10^6 A549 cells were intracellularly stained with 0.25 μ g KLF9 Recombinant antibody (83183-4-RR, Clone:230436H2) and APC-Conjugated AffiniPure Goat Anti-Rabbit IgG(H+L)(red), or 0.25 μ g Isotype Control (blue). Cells were fixed and permeabilized with True-Nuclear Transcription Factor Buffer Set. This data was developed using the same antibody clone with 83183-4-PBS in a different storage buffer formulation.



Cytometric bead array standard curve of MP00148-1, KLF9 Recombinant Matched Antibody Pair, PBS Only. Capture antibody: 83183-3-PBS. Detection antibody: 83183-4-PBS. Standard: Ag34411. Range: 0.625-20 ng/mL.



Cytometric bead array standard curve of MP00148-2, KLF9 Recombinant Matched Antibody Pair, PBS Only. Capture antibody: 83183-2-PBS. Detection antibody: 83183-4-PBS. Standard: Ag34411. Range: 0.625-20 ng/mL.



Biolayer interferometry (BLI) kinetic assays of 83183-4-RR against Human KLF9 were performed. The affinity constant is 0.767 nM.