

For Research Use Only

# KLF9 Recombinant antibody

Catalog Number: 83183-4-RR



## Basic Information

<b>Catalog Number:</b> 83183-4-RR	<b>GenBank Accession Number:</b> BC074880	<b>Purification Method:</b> Protein A purification
<b>Size:</b> 1000 µg/ml	<b>GeneID (NCBI):</b> 687	<b>CloneNo.:</b> 230436H2
<b>Source:</b> Rabbit	<b>UNIPROT ID:</b> Q13886	<b>Recommended Dilutions:</b> WB 1:5000-1:50000
<b>Isotype:</b> IgG	<b>Full Name:</b> Kruppel-like factor 9	
<b>Immunogen Catalog Number:</b> AG34411	<b>Calculated MW:</b> 27 kDa	
	<b>Observed MW:</b> 27-35 kDa	

## Applications

<b>Tested Applications:</b> WB, FC (Intra), ELISA	<b>Positive Controls:</b> WB : HeLa cells, K-562 cells, HepG2 cells, A549 cells, U2OS cells
<b>Species Specificity:</b> human	

## Background Information

Krüppel-like factor 9 (KLF9) was a member of SP/KLF family of DNA-binding transcriptional regulators featured by a highly homologous C-terminal three C2H2-type zinc finger DNA-binding domains. KLF9 has been previously reported to be downregulated in various types of human malignancy and serves as a tumour suppressor at tumour onset and development, affecting cell proliferation, apoptosis, metastasis and tumorigenicity (PMID: 32855660).

## Storage

**Storage:**  
Store at -20°C. Stable for one year after shipment.  
**Storage Buffer:**  
PBS with 0.02% sodium azide and 50% glycerol pH 7.3.  
Aliquoting is unnecessary for -20°C storage

For technical support and original validation data for this product please contact:

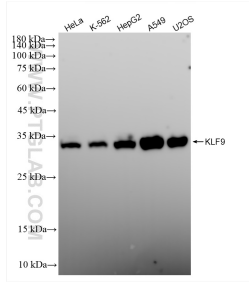
T: 4006900926

E: [Proteintech-CN@ptglab.com](mailto:Proteintech-CN@ptglab.com)

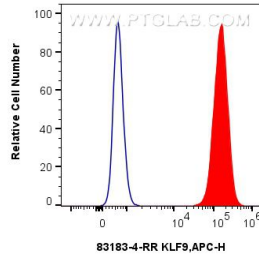
W: [ptgcn.com](http://ptgcn.com)

This product is exclusively available under Proteintech Group brand and is not available to purchase from any other manufacturer.

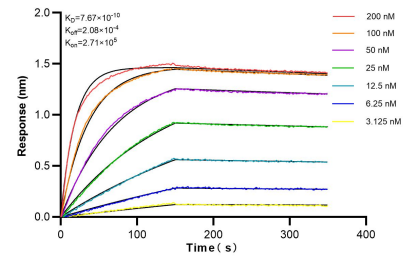
## Selected Validation Data



Various lysates were subjected to SDS PAGE followed by western blot with 83183-4-RR (KLF9 antibody) at dilution of 1:10000 incubated at room temperature for 1.5 hours.



$1 \times 10^6$  A549 cells were intracellularly stained with 0.25  $\mu$ g KLF9 Recombinant antibody (83183-4-RR, Clone:230436H2) and APC-Conjugated AffiniPure Goat Anti-Rabbit IgG(H+L)(red), or 0.25  $\mu$ g Isotype Control (blue). Cells were fixed and permeabilized with True-Nuclear Transcription Factor Buffer Set.



Bioluminescence resonance energy transfer (BRET) kinetic assays of 83183-4-RR against Human KLF9 were performed. The affinity constant is 0.767 nM.