

For Research Use Only

SMC6 Recombinant antibody, PBS Only (Capture)

Catalog Number: 83187-3-PBS



Basic Information

Catalog Number: 83187-3-PBS	GenBank Accession Number: BC039828	Purification Method: Protein A purification
Size: 1mg/ml	GeneID (NCBI): 79677	CloneNo.: 240015F4
Source: Rabbit	UNIPROT ID: Q965B8	
Isotype: IgG	Full Name: structural maintenance of chromosomes 6	
Immunogen Catalog Number: AG6898	Calculated MW: 126 kDa	
	Observed MW: 130 kDa	

Applications

Tested Applications:
WB, IF-P, FC (Intra), Cytometric bead array, Indirect
ELISA

Species Specificity:
human, mouse

Background Information

SMC6 (Structural maintenance of chromosomes protein 6) is core component of the SMC5-SMC6 complex that is involved in DNA double-strand breaks by homologous recombination. The complex may promote sister chromatid homologous recombination by recruiting the SMC1-SMC3 cohesin complex to double-strand breaks. The complex is required for telomere maintenance via recombination in ALT (alternative lengthening of telomeres) cell lines and mediates sumoylation of shelterin complex (telosome) components which is proposed to lead to shelterin complex disassembly in ALT-associated PML bodies (APBs) (PMID: 26983541).

Storage

Storage:
Store at -80°C.
The product is shipped with ice packs. Upon receipt, store it immediately at -80°C

Storage Buffer:
PBS Only

For technical support and original validation data for this product please contact:

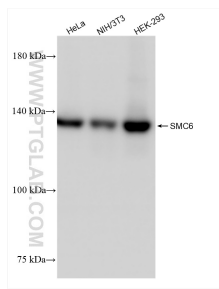
T: 4006900926

E: Proteintech-CN@ptglab.com

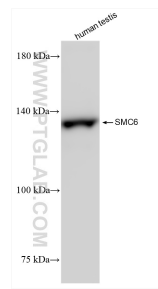
W: ptgcn.com

This product is exclusively available under Proteintech Group brand and is not available to purchase from any other manufacturer.

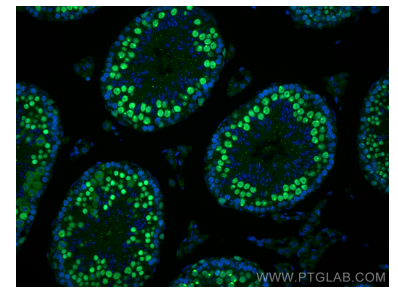
Selected Validation Data



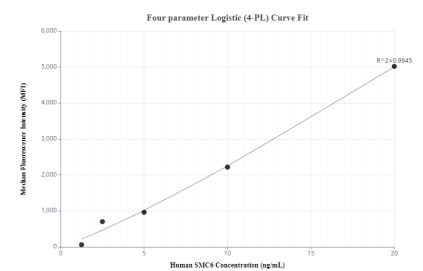
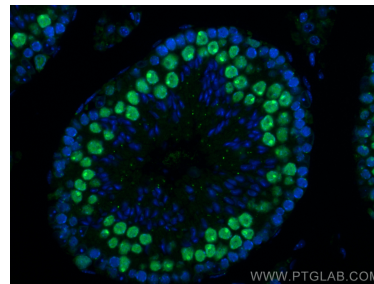
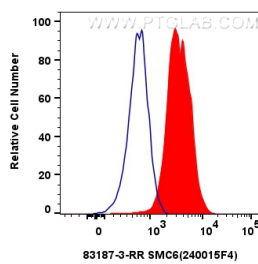
Various lysates were subjected to SDS PAGE followed by western blot with 83187-3-RR (SMC6 antibody) at dilution of 1:10000 incubated at room temperature for 1.5 hours. This data was developed using the same antibody clone with 83187-3-PBS in a different storage buffer formulation.



human testis tissue were subjected to SDS PAGE followed by western blot with 83187-3-RR (SMC6 antibody) at dilution of 1:10000 incubated at room temperature for 1.5 hours. This data was developed using the same antibody clone with 83187-3-PBS in a different storage buffer formulation.



Immunofluorescent analysis of (4% PFA) fixed paraffin-embedded mouse testis tissue using SMC6 antibody (83187-3-RR, Clone: 240015F4) at dilution of 1:200 and Multi-rAb CoraLite® Plus 488-Goat Anti-Rabbit Recombinant Secondary Antibody (H+L) (RGAR002). Heat mediated antigen retrieval with Tris-EDTA buffer (pH 9.0). This data was developed using the same antibody clone with 83187-3-PBS in a different storage buffer formulation.

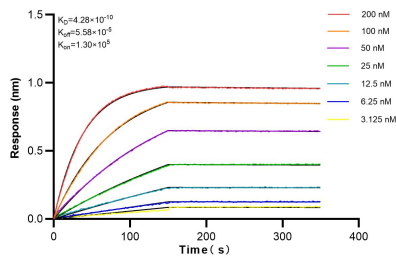


1x10⁶ A431 cells were intracellularly stained with 0.25 ug SMC6 Recombinant antibody (83187-3-RR, Clone:240015F4) and CoraLite®488-Conjugated AffiniPure Goat Anti-Rabbit IgG(H+L) (SA00013-2)(red), or 0.25 ug Rabbit IgG control Rabbit PolyAb (30000-0-AP) (blue). Cells were fixed with 4% PFA and permeabilized with Flow Cytometry Perm Buffer (PF00011-C). This data was developed using the same antibody clone with 83187-3-PBS in a different storage buffer formulation.



Immunofluorescent analysis of (4% PFA) fixed paraffin-embedded mouse testis tissue using SMC6 antibody (83187-3-RR, Clone: 240015F4) at dilution of 1:200 and Multi-rAb CoraLite® Plus 488-Goat Anti-Rabbit Recombinant Secondary Antibody (H+L) (RGAR002). Heat mediated antigen retrieval with Tris-EDTA buffer (pH 9.0). This data was developed using the same antibody clone with 83187-3-PBS in a different storage buffer formulation.

Cytometric bead array standard curve of MP00255-2, SMC6 Recombinant Matched Antibody Pair, PBS Only. Capture antibody: 83187-3-PBS. Detection antibody: 83187-1-PBS. Standard: Ag6898. Range: 1.25-20 ng/mL.



Biolayer interferometry (BLI) kinetic assays of 83187-3-RR against Human SMC6 were performed. The affinity constant is 0.428 nM.