

For Research Use Only

# ATP1A1 Recombinant antibody

Catalog Number: 83191-5-RR



## Basic Information

<b>Catalog Number:</b> 83191-5-RR	<b>GenBank Accession Number:</b> BC050359	<b>Purification Method:</b> Protein A purification
<b>Size:</b> 1000 µg/ml	<b>GeneID (NCBI):</b> 476	<b>CloneNo.:</b> 240160B5
<b>Source:</b> Rabbit	<b>ENSEMBL Gene ID:</b> ENSG00000163399	<b>Recommended Dilutions:</b> IF/ICC 1:500-1:2000
<b>Isotype:</b> IgG	<b>UNIPROT ID:</b> P05023	
<b>Immunogen Catalog Number:</b> AG5763	<b>Full Name:</b> ATPase, Na <sup>+</sup> /K <sup>+</sup> transporting, alpha 1 polypeptide	
	<b>Calculated MW:</b> 113 kDa	

## Applications

<b>Tested Applications:</b> IF/ICC, FC (Intra), ELISA	<b>Positive Controls:</b> IF/ICC : A431 cells,
<b>Species Specificity:</b> human	

## Background Information

ATP1A1 is the catalytic component of Na<sup>+</sup>/K<sup>+</sup>-ATPase which is a membrane bound enzyme primarily involved in generation of Na<sup>+</sup> and K<sup>+</sup> gradients across plasma membranes and in determination of cytoplasmic Na<sup>+</sup> levels. ATP1A1 is a ubiquitously expressed membrane protein and often used as the marker or internal control for plasma membrane protein.

## Storage

**Storage:**  
Store at -20°C. Stable for one year after shipment.  
**Storage Buffer:**  
PBS with 0.02% sodium azide and 50% glycerol pH 7.3.  
Aliquoting is unnecessary for -20°C storage

For technical support and original validation data for this product please contact:

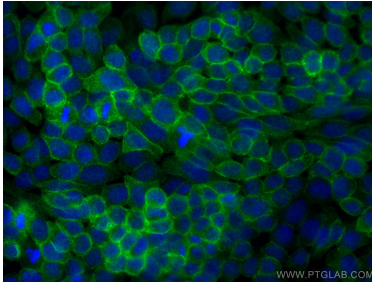
T: 4006900926

E: [Proteintech-CN@ptglab.com](mailto:Proteintech-CN@ptglab.com)

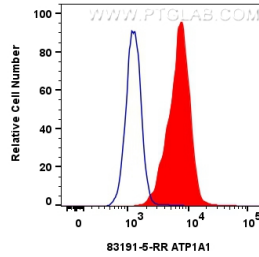
W: [ptgcn.com](http://ptgcn.com)

This product is exclusively available under Proteintech Group brand and is not available to purchase from any other manufacturer.

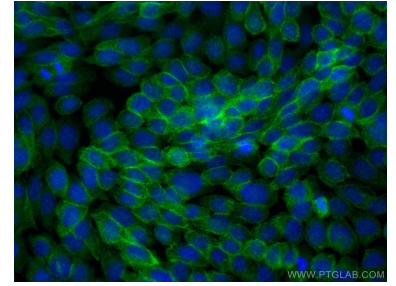
## Selected Validation Data



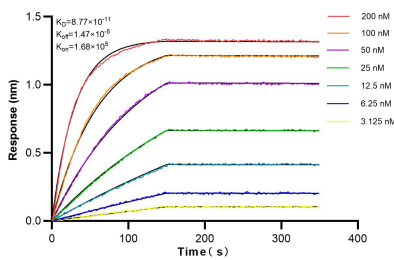
Immunofluorescent analysis of (-20°C Methanol) fixed A431 cells using ATP1A1 antibody (83191-5-RR, Clone: 240160B5 ) at dilution of 1:1000 and CoraLite®488-Conjugated AffiniPure Goat Anti-Rabbit IgG(H+L) (SA00013-2).



1x10<sup>6</sup> HEK-293 cells were intracellularly stained with 0.2 ug ATP1A1 Recombinant antibody (83191-5-RR, Clone:240160B5) and CoraLite®488-Conjugated AffiniPure Goat Anti-Rabbit IgG(H+L) (SA00013-2)(red), or 0.2 ug Isotype Control (blue). Cells were fixed with 4% PFA and permeabilized with Flow Cytometry Perm Buffer (PF00011-C).



Immunofluorescent analysis of (-20°C Methanol) fixed A431 cells using ATP1A1 antibody (83191-5-RR, Clone: 240160B5 ) at dilution of 1:1000 and CoraLite®488-Conjugated AffiniPure Goat Anti-Rabbit IgG(H+L) (SA00013-2).



Bi-layer interferometry (BLI) kinetic assays of 83191-5-RR against Human ATP1A1 were performed. The affinity constant is 87.7 pM.