

For Research Use Only

# ATP1A1 Recombinant antibody, PBS Only



Catalog Number: 83191-6-PBS

## Basic Information

<b>Catalog Number:</b> 83191-6-PBS	<b>GenBank Accession Number:</b> BC050359	<b>Purification Method:</b> Protein A purification
<b>Size:</b> 1mg/ml	<b>GeneID (NCBI):</b> 476	<b>CloneNo.:</b> 240160E12
<b>Source:</b> Rabbit	<b>ENSEMBL Gene ID:</b> ENSG00000163399	
<b>Isotype:</b> IgG	<b>UNIPROT ID:</b> P05023	
<b>Immunogen Catalog Number:</b> AG5763	<b>Full Name:</b> ATPase, Na <sup>+</sup> /K <sup>+</sup> transporting, alpha 1 polypeptide	
	<b>Calculated MW:</b> 113 kDa	
	<b>Observed MW:</b> 100-110 kDa	

## Applications

**Tested Applications:**  
WB, IF/ICC, FC (Intra), Indirect ELISA

**Species Specificity:**  
human, mouse

## Background Information

ATP1A1 is the catalytic component of Na<sup>+</sup>/K<sup>+</sup>-ATPase which is a membrane bound enzyme primarily involved in generation of Na<sup>+</sup> and K<sup>+</sup> gradients across plasma membranes and in determination of cytoplasmic Na<sup>+</sup> levels. ATP1A1 is a ubiquitously expressed membrane protein and often used as the marker or internal control for plasma membrane protein. For optimal WB detection of this membrane protein, we recommend to avoid boiling the sample after lysis.

## Storage

**Storage:**  
Store at -80°C.  
**The product is shipped with ice packs. Upon receipt, store it immediately at -80°C**

**Storage Buffer:**  
PBS Only

For technical support and original validation data for this product please contact:

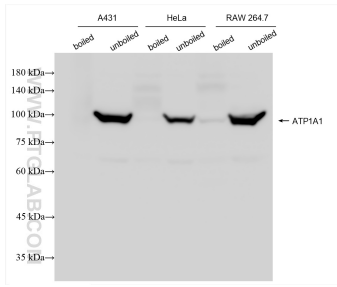
T: 4006900926

E: [Proteintech-CN@ptglab.com](mailto:Proteintech-CN@ptglab.com)

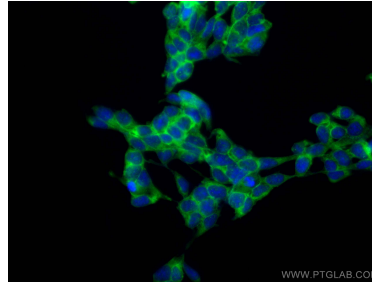
W: [ptgcn.com](http://ptgcn.com)

**This product is exclusively available under Proteintech Group brand and is not available to purchase from any other manufacturer.**

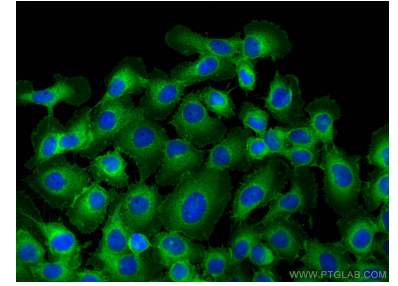
## Selected Validation Data



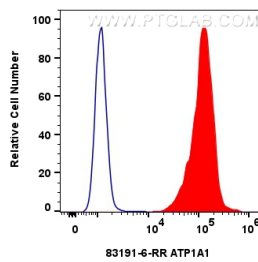
Various lysates were subjected to SDS PAGE followed by western blot with 83191-6-RR (ATP1A1 antibody) at dilution of 1:10000 incubated at room temperature for 1.5 hours. This data was developed using the same antibody clone with 83191-6-PBS in a different storage buffer formulation.



Immunofluorescent analysis of (-20°C Ethanol) fixed HEK-293 cells using ATP1A1 antibody (83191-6-RR, Clone: 240160E12 ) at dilution of 1:1000 and CoraLite®488-Conjugated AffiniPure Goat Anti-Rabbit IgG(H+L) (SA00013-2). This data was developed using the same antibody clone with 83191-6-PBS in a different storage buffer formulation.



Immunofluorescent analysis of (-20°C Methanol) fixed A431 cells using ATP1A1 antibody (83191-6-RR, Clone: 240160E12 ) at dilution of 1:500 and CoraLite®488-Conjugated AffiniPure Goat Anti-Rabbit IgG(H+L) (SA00013-2). This data was developed using the same antibody clone with 83191-6-PBS in a different storage buffer formulation.



1x10<sup>6</sup> HEK-293 cells were intracellularly stained with 0.4 ug ATP1A1 Recombinant antibody (83191-6-RR, Clone:240160E12) and CoraLite®488-Conjugated AffiniPure Goat Anti-Rabbit IgG(H+L) (SA00013-2)(red), or 0.4 ug Isotype Control (blue). Cells were fixed with 4% PFA and permeabilized with Flow Cytometry Perm Buffer (PF00011-C). This data was developed using the same antibody clone with 83191-6-PBS in a different storage buffer formulation.

