

For Research Use Only

# ATP1A1 Recombinant antibody

Catalog Number: 83191-6-RR



## Basic Information

<b>Catalog Number:</b> 83191-6-RR	<b>GenBank Accession Number:</b> BC050359	<b>Purification Method:</b> Protein A purification
<b>Size:</b> 1000 µg/ml	<b>GeneID (NCBI):</b> 476	<b>CloneNo.:</b> 240160E12
<b>Source:</b> Rabbit	<b>ENSEMBL Gene ID:</b> ENSG00000163399	<b>Recommended Dilutions:</b> WB 1:5000-1:50000 IF/ICC 1:250-1:1000
<b>Isotype:</b> IgG	<b>UNIPROT ID:</b> P05023	
<b>Immunogen Catalog Number:</b> AG5763	<b>Full Name:</b> ATPase, Na <sup>+</sup> /K <sup>+</sup> transporting, alpha 1 polypeptide	
	<b>Calculated MW:</b> 113 kDa	
	<b>Observed MW:</b> 100-110 kDa	

## Applications

<b>Tested Applications:</b> WB, IF/ICC, FC (Intra), ELISA	<b>Positive Controls:</b>
<b>Species Specificity:</b> human, mouse	<b>WB :</b> unboiled A431 cells, unboiled HeLa cells, unboiled RAW 264.7 cells
	<b>IF/ICC :</b> A431 cells, HEK-293 cells

## Background Information

ATP1A1 is the catalytic component of Na<sup>+</sup>/K<sup>+</sup>-ATPase which is a membrane bound enzyme primarily involved in generation of Na<sup>+</sup> and K<sup>+</sup> gradients across plasma membranes and in determination of cytoplasmic Na<sup>+</sup> levels. ATP1A1 is a ubiquitously expressed membrane protein and often used as the marker or internal control for plasma membrane protein. For optimal WB detection of this membrane protein, we recommend to avoid boiling the sample after lysis.

## Storage

**Storage:**  
Store at -20°C. Stable for one year after shipment.  
**Storage Buffer:**  
PBS with 0.02% sodium azide and 50% glycerol pH 7.3.  
Aliquoting is unnecessary for -20°C storage

For technical support and original validation data for this product please contact:

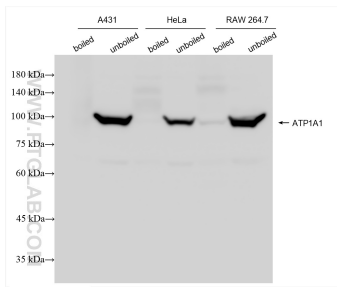
T: 4006900926

E: [Proteintech-CN@ptglab.com](mailto:Proteintech-CN@ptglab.com)

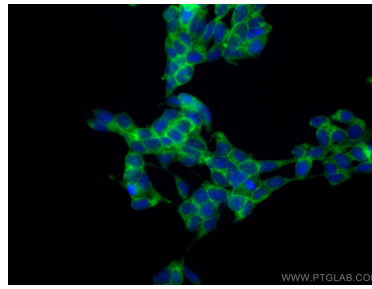
W: [ptgcn.com](http://ptgcn.com)

This product is exclusively available under Proteintech Group brand and is not available to purchase from any other manufacturer.

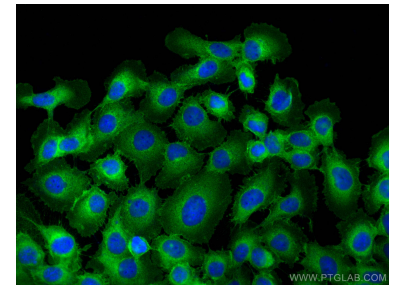
## Selected Validation Data



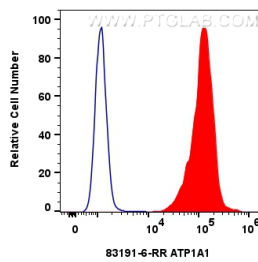
Various lysates were subjected to SDS PAGE followed by western blot with 83191-6-RR (ATP1A1 antibody) at dilution of 1:10000 incubated at room temperature for 1.5 hours.



Immunofluorescent analysis of (-20°C Ethanol) fixed HEK-293 cells using ATP1A1 antibody (83191-6-RR, Clone: 240160E12 ) at dilution of 1:1000 and Coralite@488-Conjugated AffiniPure Goat Anti-Rabbit IgG(H+L) (SA00013-2).



Immunofluorescent analysis of (-20°C Methanol) fixed A431 cells using ATP1A1 antibody (83191-6-RR, Clone: 240160E12 ) at dilution of 1:500 and Coralite@488-Conjugated AffiniPure Goat Anti-Rabbit IgG(H+L) (SA00013-2).



1x10<sup>6</sup> HEK-293 cells were intracellularly stained with 0.4 ug ATP1A1 Recombinant antibody (83191-6-RR, Clone:240160E12) and Coralite@488-Conjugated AffiniPure Goat Anti-Rabbit IgG(H+L) (SA00013-2)(red), or 0.4 ug Isotype Control (blue). Cells were fixed with 4% PFA and permeabilized with Flow Cytometry Perm Buffer (PF00011-C).