

For Research Use Only

SLC22A4 Recombinant antibody, PBS Only (Capture/Detector)



Catalog Number: 83192-4-PBS

Basic Information

Catalog Number: 83192-4-PBS	GenBank Accession Number: BC028313	Purification Method: Protein A purification
Size: 1 mg/ml	GeneID (NCBI): 6583	CloneNo.: 240064G1
Source: Rabbit	UNIPROT ID: Q9H015	
Isotype: IgG	Full Name: solute carrier family 22 (organic cation/ergothioneine transporter), member 4	
Immunogen Catalog Number: AG3974	Calculated MW: 551 aa, 62 kDa	

Applications

Tested Applications:
Cytometric bead array, Indirect ELISA

Species Specificity:
mouse, human

Background Information

Storage

Storage:
Store at -80°C.
The product is shipped with ice packs. Upon receipt, store it immediately at -80°C

Storage Buffer:
PBS Only

For technical support and original validation data for this product please contact:

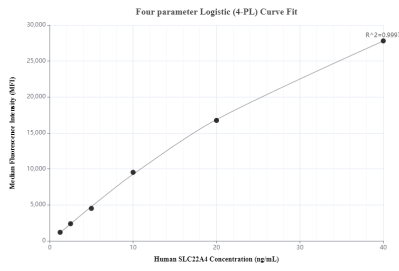
T: 4006900926

E: Proteintech-CN@ptglab.com

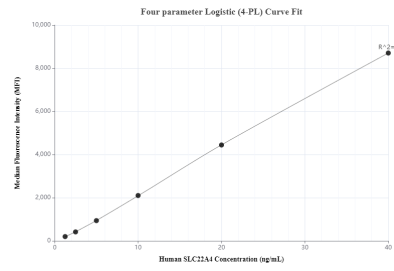
W: ptgcn.com

This product is exclusively available under Proteintech Group brand and is not available to purchase from any other manufacturer.

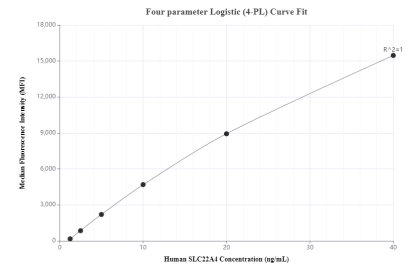
Selected Validation Data



Cytometric bead array standard curve ofMP00292-1, SLC22A4 Recombinant Matched Antibody Pair, PBS Only. Capture antibody: 83192-4-PBS. Detection antibody: 83192-3-PBS. Standard: Ag3974. Range: 1.25-40 ng/mL



Cytometric bead array standard curve ofMP00292-2, SLC22A4 Recombinant Matched Antibody Pair, PBS Only. Capture antibody: 83192-2-PBS. Detection antibody: 83192-4-PBS. Standard: Ag3974. Range: 1.25-40 ng/mL



Cytometric bead array standard curve ofMP00292-3, SLC22A4 Recombinant Matched Antibody Pair, PBS Only. Capture antibody: 83192-4-PBS. Detection antibody: 83192-1-PBS. Standard: Ag3974. Range: 1.25-40 ng/mL