

For Research Use Only

# ATP6 Recombinant antibody

Catalog Number: 83201-3-RR



## Basic Information

<b>Catalog Number:</b> 83201-3-RR	<b>GenBank Accession Number:</b> J01415	<b>Purification Method:</b> Protein A purification
<b>Size:</b> 700 µg/ml	<b>GeneID (NCBI):</b> 4508	<b>CloneNo.:</b> 240041B6
<b>Source:</b> Rabbit	<b>UNIPROT ID:</b> P00846	<b>Recommended Dilutions:</b> IF/ICC 1:150-1:600
<b>Isotype:</b> IgG	<b>Full Name:</b> ATP synthase 6; ATPase subunit 6	
	<b>Calculated MW:</b> 25 kDa	

## Applications

<b>Tested Applications:</b> IF/ICC, FC (Intra), ELISA	<b>Positive Controls:</b> IF/ICC : HeLa cells,
<b>Species Specificity:</b> human	

## Background Information

ATP synthase, also known as FoF1 complex, is a critical mitochondrial OXPHOS enzyme involved in the regulation of mitochondrial ATP production and in the maintenance of the mitochondrial membrane potential. It is composed of three components (F1, Fo and the peripheral stalk). F1, the soluble catalytic core, is above the membrane, inside the matrix of the mitochondria; consists of 5 different subunits (alpha, beta, gamma, delta, and epsilon); Fo, comprising the proton channel, is within the membrane; Fo seems to have nine subunits (a, b, c, d, e, f, g, F6 and 8). ATP6 is the a subunit of Fo region.

## Storage

**Storage:**  
Store at -20°C. Stable for one year after shipment.  
**Storage Buffer:**  
PBS with 0.02% sodium azide and 50% glycerol pH 7.3.  
Aliquoting is unnecessary for -20°C storage

For technical support and original validation data for this product please contact:

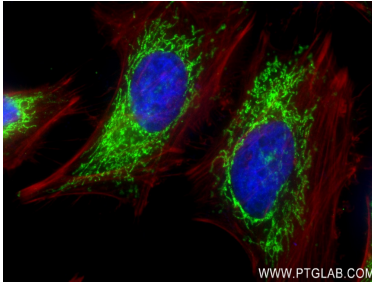
T: 4006900926

E: [Proteintech-CN@ptglab.com](mailto:Proteintech-CN@ptglab.com)

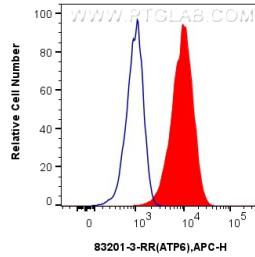
W: [ptgcn.com](http://ptgcn.com)

This product is exclusively available under Proteintech Group brand and is not available to purchase from any other manufacturer.

## Selected Validation Data



Immunofluorescent analysis of (4% PFA) fixed HeLa cells using ATP6 antibody (83201-3-RR, Clone: 240041B6) at dilution of 1:300 and CoraLite® 488-Conjugated AffiniPure Goat Anti-Mouse IgG(H+L) (SA00013-1), CL594-Phalloidin (red).



1x10<sup>6</sup> U2OS cells were intracellularly stained with 0.25 ug ATP6 Recombinant antibody (83201-3-RR, Clone:240041B6) and APC-Conjugated AffiniPure Goat Anti-Rabbit IgG(H+L)(red), or 0.25 ug Isotype Control (blue). Cells were fixed with 4% PFA and permeabilized with Flow Cytometry Perm Buffer (PF00011-C).