

For Research Use Only

# KLF5 Recombinant antibody, PBS Only



Catalog Number: 83205-4-PBS

## Basic Information

Catalog Number: 83205-4-PBS	GenBank Accession Number: BC042131	Purification Method: Protein A purification
Size: 1 mg/ml	GeneID (NCBI): 688	CloneNo.: 230509G7
Source: Rabbit	UNIPROT ID: Q13887	
Isotype: IgG	Full Name: Kruppel-like factor 5 (intestinal)	
Immunogen Catalog Number: AG15267	Calculated MW: 457 aa, 51 kDa	

## Applications

Tested Applications:  
IF, ELISA

Species Specificity:  
Human

## Background Information

### Storage

Storage:  
Store at -80°C.  
Storage Buffer:  
PBS Only

For technical support and original validation data for this product please contact:

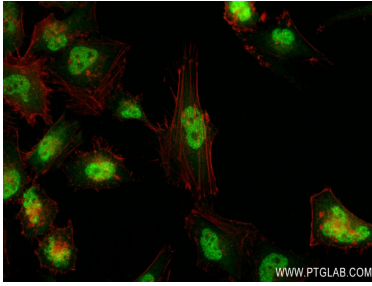
T: 4006900926

E: [Proteintech-CN@ptglab.com](mailto:Proteintech-CN@ptglab.com)

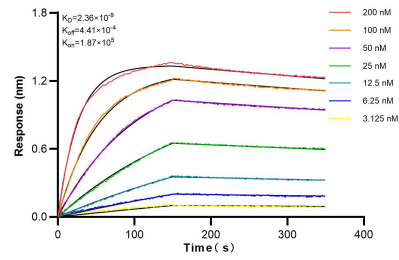
W: [ptgcn.com](http://ptgcn.com)

This product is exclusively available under Proteintech Group brand and is not available to purchase from any other manufacturer.

## Selected Validation Data



Immunofluorescent analysis of (4% PFA) fixed HeLa cells using KLF5 antibody (83205-4-RR, Clone: 230509G7) at dilution of 1:800 and CoraLite®488-Conjugated AffiniPure Goat Anti-Rabbit IgG(H+L) (SA00013-2), CL594-Phalloidin (red). This data was developed using the same antibody clone with 83205-4-PBS in a different storage buffer formulation.



Biolayer interferometry (BLI) kinetic assays of 83205-4-RR against Human KLF5 were performed. The affinity constant is 2.36 nM.