

For Research Use Only

KLF5 Recombinant antibody

Catalog Number: 83205-4-RR



Basic Information

Catalog Number: 83205-4-RR	GenBank Accession Number: BC042131	Purification Method: Protein A purification
Size: 1000 µg/ml	GeneID (NCBI): 688	CloneNo.: 230509G7
Source: Rabbit	UNIPROT ID: Q13887	Recommended Dilutions: IF 1:400-1:1600
Isotype: IgG	Full Name: Kruppel-like factor 5 (intestinal)	
Immunogen Catalog Number: AG15267	Calculated MW: 457 aa, 51 kDa	
	Observed MW: 51-57 kDa	

Applications

Tested Applications: IF/ICC, ELISA	Positive Controls: IF : HeLa cells,
Species Specificity: Human	

Background Information

KLF5, also known as BTEB2 and IKLF, is a member of the Krueppel-like transcription factor family. It is a transcription factor for SMemb/non-muscle myosin heavy chain-B (NMHC-B). It is a molecular marker of phenotypically modulated smooth-muscle cells. KLF5 seems to be a key element linking external stress and cardiovascular remodeling.

Storage

Storage:
Store at -20°C. Stable for one year after shipment.
Storage Buffer:
PBS with 0.02% sodium azide and 50% glycerol pH 7.3.
Aliquoting is unnecessary for -20°C storage

For technical support and original validation data for this product please contact:

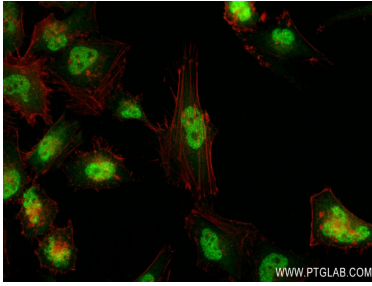
T: 4006900926

E: Proteintech-CN@ptglab.com

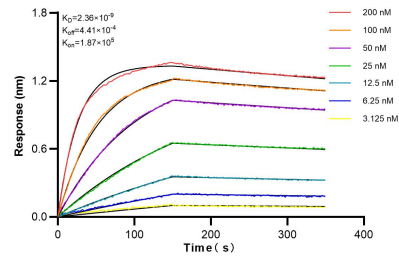
W: ptgcn.com

This product is exclusively available under Proteintech Group brand and is not available to purchase from any other manufacturer.

Selected Validation Data



Immunofluorescent analysis of (4% PFA) fixed HeLa cells using KLF5 antibody (83205-4-RR, Clone: 230509G7) at dilution of 1:800 and CoraLite®488-Conjugated AffiniPure Goat Anti-Rabbit IgG(H+L) (SA00013-2), CL594-Phalloidin (red).



Bilayer interferometry (BLI) kinetic assays of 83205-4-RR against Human KLF5 were performed. The affinity constant is 2.36 nM.