

For Research Use Only

RILPL1 Recombinant antibody, PBS Only



Catalog Number: 83220-6-PBS

Basic Information

| | | |
|---|---|---|
| Catalog Number: 83220-6-PBS | GenBank Accession Number: BC080626 | Purification Method: Protein A purification |
| Size: 1 mg/ml | GeneID (NCBI): 353116 | CloneNo.: 230515D1 |
| Source: Rabbit | UNIPROT ID: Q5EBL4 | |
| Isotype: IgG | Full Name: Rab interacting lysosomal protein-like 1 | |
| Immunogen Catalog Number: AG10192 | Calculated MW: 252 aa, 29 kDa | |

Applications

Tested Applications:
WB, ELISA

Species Specificity:
Human

Background Information

Storage

Storage:
Store at -80°C.
The product is shipped with ice packs. Upon receipt, store it immediately at -80°C

Storage Buffer:
PBS Only

For technical support and original validation data for this product please contact:

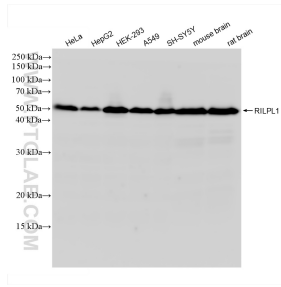
T: 4006900926

E: Proteintech-CN@ptglab.com

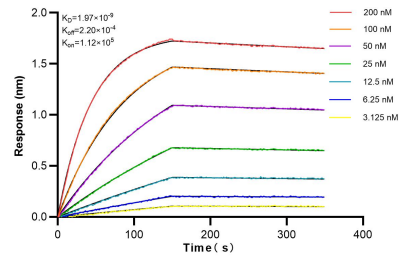
W: ptgcn.com

This product is exclusively available under Proteintech Group brand and is not available to purchase from any other manufacturer.

Selected Validation Data



Various lysates were subjected to SDS PAGE followed by western blot with 83220-6-RR (RILPL1 antibody) at dilution of 1:10000 incubated at room temperature for 1.5 hours. This data was developed using the same antibody clone with 83220-6-PBS in a different storage buffer formulation.



Biolayer interferometry (BLI) kinetic assays of 83220-6-RR against Human RILPL1 were performed. The affinity constant is 1.97 nM.