

For Research Use Only

# RILPL1 Recombinant antibody

Catalog Number: 83220-6-RR

Featured Product



## Basic Information

Catalog Number:

83220-6-RR

Size:

1000 ug/ml

Source:

Rabbit

Isotype:

IgG

Immunogen Catalog Number:

AG10192

GenBank Accession Number:

BC080626

GeneID (NCBI):

353116

UNIPROT ID:

Q5EBL4

Full Name:

Rab interacting lysosomal protein-like 1

Calculated MW:

252 aa, 29 kDa

Observed MW:

50 kDa

Purification Method:

Protein A purification

CloneNo.:

230515D1

Recommended Dilutions:

WB 1:5000-1:50000

## Applications

Tested Applications:

WB, ELISA

Species Specificity:

human, mouse, rat

Positive Controls:

WB : HeLa cells, HepG2 cells, HEK-293 cells, A549 cells, SH-SY5Y cells, mouse brain tissue, rat brain tissue

## Background Information

Rab effector-related proteins Rab-interacting lysosomal protein-like 1 (Rilpl1) and Rilpl2 regulate protein localization in the primary cilium. Rilpl2 was initially identified as up-regulated in ciliating mouse tracheal epithelial cells. Rilpl1 and Rilpl2 both localize to the primary cilium and centrosome, Rilpl1 specifically to the distal end of the mother centriole.(PMID:23264467)

## Storage

Storage:

Store at -20°C. Stable for one year after shipment.

Storage Buffer:

PBS with 0.02% sodium azide and 50% glycerol pH 7.3.

Aliquoting is unnecessary for -20°C storage

For technical support and original validation data for this product please contact:

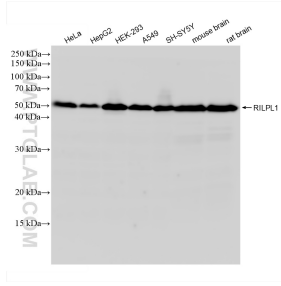
T: 4006900926

E: [Proteintech-CN@ptglab.com](mailto:Proteintech-CN@ptglab.com)

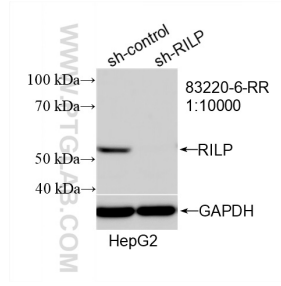
W: [ptgcn.com](http://ptgcn.com)

This product is exclusively available under Proteintech Group brand and is not available to purchase from any other manufacturer.

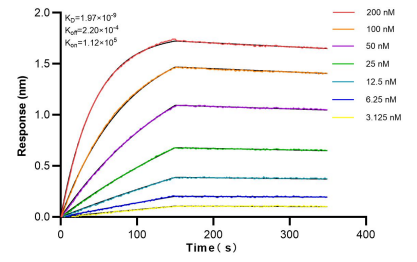
## Selected Validation Data



Various lysates were subjected to SDS PAGE followed by western blot with 83220-6-RR (RILPL1 antibody) at dilution of 1:10000 incubated at room temperature for 1.5 hours.



WB result of RILPL1 antibody (83220-6-RR; 1:10000; incubated at room temperature for 1.5 hours) with sh-Control and sh-RILP1 transfected HepG2 cells.



Biacore interferometry (BLI) kinetic assays of 83220-6-RR against Human RILPL1 were performed. The affinity constant is 1.97 nM.