

For Research Use Only

# Rat KIM-1/HAVCR1 Recombinant antibody, PBS Only (Capture)



Catalog Number: 83221-2-PBS

## Basic Information

<b>Catalog Number:</b> 83221-2-PBS	<b>GenBank Accession Number:</b> NM_173149.2	<b>Purification Method:</b> Protein A purification
<b>Size:</b> 1 mg/ml	<b>GeneID (NCBI):</b> 286934	<b>CloneNo.:</b> 230528C5
<b>Source:</b> Rabbit	<b>UNIPROT ID:</b> O54947	
<b>Isotype:</b> IgG	<b>Full Name:</b> hepatitis A virus cellular receptor 1	
	<b>Calculated MW:</b> 34 kDa	

## Applications

**Tested Applications:**  
Cytometric bead array, Indirect ELISA, WB

**Species Specificity:**  
rat, mouse, human

## Background Information

### Storage

**Storage:**  
Store at -80°C.  
**The product is shipped with ice packs. Upon receipt, store it immediately at -80°C**

**Storage Buffer:**  
PBS Only

For technical support and original validation data for this product please contact:

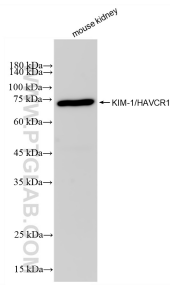
T: 4006900926

E: [Proteintech-CN@ptglab.com](mailto:Proteintech-CN@ptglab.com)

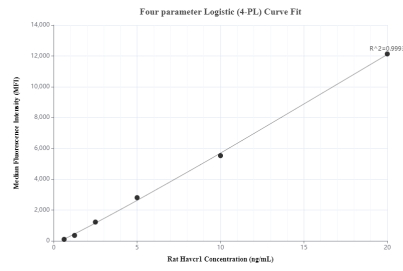
W: [ptgcn.com](http://ptgcn.com)

**This product is exclusively available under Proteintech Group brand and is not available to purchase from any other manufacturer.**

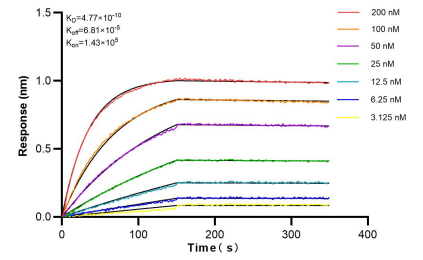
## Selected Validation Data



Mouse kidney tissue was subjected to SDS PAGE followed by western blot with 83221-2-RR (HAVCR1 antibody) at dilution of 1:10000 incubated at room temperature for 1.5 hours. This data was developed using the same antibody clone with 83221-2-PBS in a different storage buffer formulation.



Cytometric bead array standard curve of MP00213-2, Rat KIM-1/HAVCR1 Recombinant Matched Antibody Pair, PBS Only. Capture antibody: 83221-2-PBS. Detection antibody: 83221-4-PBS. Standard: Eg0597. Range: 0.625-20 ng/mL.



Bi-layer interferometry (BLI) kinetic assays of 83221-2-RR against Rat HAVCR1 were performed. The affinity constant is 0.477 nM.