

For Research Use Only

# SLC12A8 Recombinant antibody

Catalog Number:83225-2-RR



## Basic Information

Catalog Number:

83225-2-RR

Size:

1000 ug/ml

Source:

Rabbit

Isotype:

IgG

Immunogen Catalog Number:

AG34354

GenBank Accession Number:

BC020506

GeneID (NCBI):

84561

UNIPROT ID:

A0AV02

Full Name:

solute carrier family 12  
(potassium/chloride transporters),  
member 8

Calculated MW:

714 aa, 80 kDa

Purification Method:

Protein A purification

CloneNo.:

240082B11

Recommended Dilutions:

IHC 1:50-1:500

IF/ICC 1:200-1:800

## Applications

Tested Applications:

IHC, IF/ICC, FC (Intra), ELISA

Species Specificity:

human

**Note-IHC: suggested antigen retrieval with  
TE buffer pH 9.0; (\*) Alternatively, antigen  
retrieval may be performed with citrate  
buffer pH 6.0**

Positive Controls:

IHC : human intrahepatic cholangiocarcinoma tissue,

IF/ICC : U2OS cells,

## Background Information

### Storage

Storage:

Store at -20°C. Stable for one year after shipment.

Storage Buffer:

PBS with 0.02% sodium azide and 50% glycerol pH 7.3.

Aliquoting is unnecessary for -20°C storage

For technical support and original validation data for this product please contact:

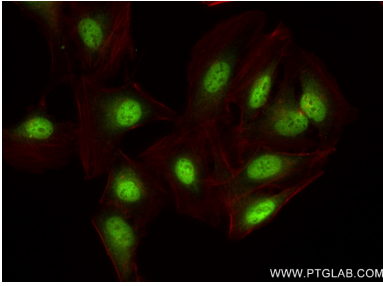
T: 4006900926

E: Proteintech-CN@ptglab.com

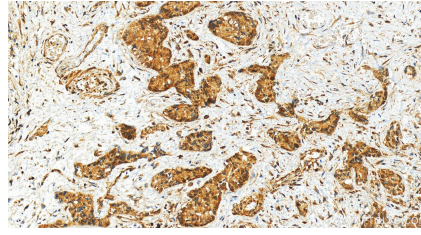
W: ptgcn.com

**This product is exclusively available under Proteintech Group brand and is not available to purchase from any other manufacturer.**

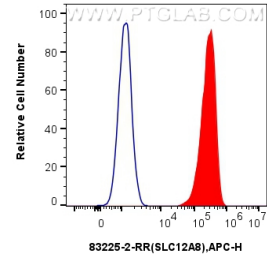
## Selected Validation Data



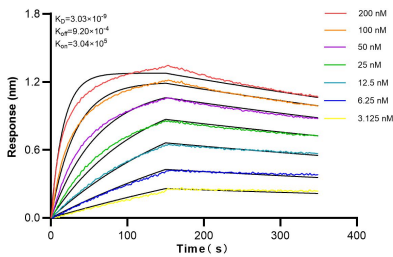
Immunofluorescent analysis of (4% PFA) fixed U2OS cells using SLC12A8 antibody (83225-2-RR, Clone: 240082B11) at dilution of 1:400 and CoraLite®488-Conjugated AffiniPure Goat Anti-Rabbit IgG(H+L) (SA00013-2), CL594-Phalloidin (red).



Immunohistochemical analysis of paraffin-embedded human intrahepatic cholangiocarcinoma tissue slide using 83225-2-RR (SLC12A8 antibody) at dilution of 1:200 (under 20x lens). Heat mediated antigen retrieval with Tris-EDTA buffer (pH 9.0).



$1 \times 10^6$  MCF-7 cells were intracellularly stained with 0.25  $\mu$ g SLC12A8 Recombinant antibody (83225-2-RR, Clone:240082B11) and APC-Conjugated AffiniPure Goat Anti-Rabbit IgG(H+L) (red), or 0.25  $\mu$ g Isotype Control (blue). Cells were fixed and permeabilized with Transcription Factor Staining Buffer Kit (PF00011).



Bi-layer interferometry (BLI) kinetic assays of 83225-2-RR against Human SLC12A8 were performed. The affinity constant is 3.03 nM.