

For Research Use Only

SLC2A7 Recombinant antibody, PBS Only (Capture)



Catalog Number: 83226-2-PBS

Basic Information

Catalog Number:

83226-2-PBS

Size:

1mg/ml

Source:

Rabbit

Isotype:

IgG

Immunogen Catalog Number:

AG34515

GenBank Accession Number:

NM_207420

GeneID (NCBI):

155184

UNIPROT ID:

Q6PXP3

Full Name:

solute carrier family 2 (facilitated glucose transporter), member 7

Calculated MW:

512 aa, 56 kDa

Purification Method:

Protein A purification

CloneNo.:

240095B11

Applications

Tested Applications:

Indirect ELISA, Cytometric bead array

Species Specificity:

Human

Background Information

Storage

Storage:

Store at -80°C.

Storage Buffer:

PBS Only

For technical support and original validation data for this product please contact:

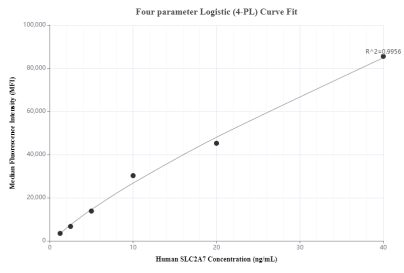
T: 4006900926

E: Proteintech-CN@ptglab.com

W: ptgcn.com

This product is exclusively available under Proteintech Group brand and is not available to purchase from any other manufacturer.

Selected Validation Data



Cytometric bead array standard curve of MP00174-1, SLC2A7 Recombinant Matched Antibody Pair, PBS Only. Capture antibody: 83226-2-PBS. Detection antibody: 83226-1-PBS. Standard: Ag34515. Range: 1.25-40 ng/mL