

For Research Use Only

# SULT1B1 Recombinant antibody, PBS Only (Capture)

Catalog Number:83228-1-PBS



## Basic Information

<b>Catalog Number:</b> 83228-1-PBS	<b>GenBank Accession Number:</b> BC010895	<b>Purification Method:</b> Protein A purification
<b>Size:</b> 1mg/ml	<b>GeneID (NCBI):</b> 27284	<b>CloneNo.:</b> 240119C12
<b>Source:</b> Rabbit	<b>UNIPROT ID:</b> O43704	
<b>Isotype:</b> IgG	<b>Full Name:</b> sulfotransferase family, cytosolic, 1B, member 1	
<b>Immunogen Catalog Number:</b> AG9009	<b>Calculated MW:</b> 296 aa, 35 kDa	
	<b>Observed MW:</b> 35 kDa	

## Applications

**Tested Applications:**  
WB, IHC, FC (Intra), Cytometric bead array, Indirect ELISA

**Species Specificity:**  
human, mouse

## Background Information

Sulfotransferase 1B1 (SULT1B1) is expressed at highest levels throughout the human colon and small intestine but can also be found at moderate levels in human liver, kidney, and white blood cells (PMID: 28084139). Certain SULT1B1 SNPs may influence the activity of thyroid hormones and the mutagenicity of polycyclic aromatic hydrocarbons (PMID: 34107842).

## Storage

**Storage:**  
Store at -80°C.  
**The product is shipped with ice packs. Upon receipt, store it immediately at -80°C**

**Storage Buffer:**  
PBS Only

For technical support and original validation data for this product please contact:

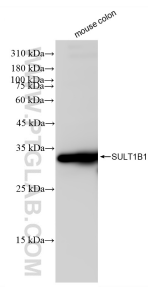
T: 4006900926

E: [Proteintech-CN@ptglab.com](mailto:Proteintech-CN@ptglab.com)

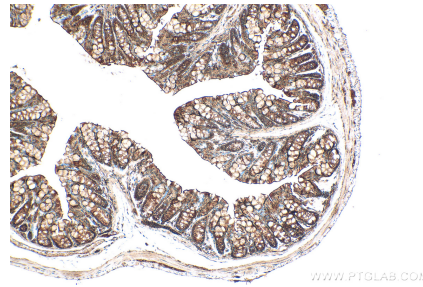
W: [ptgcn.com](http://ptgcn.com)

**This product is exclusively available under Proteintech Group brand and is not available to purchase from any other manufacturer.**

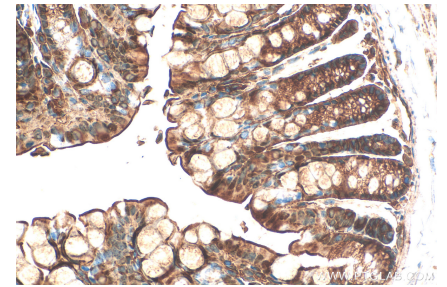
## Selected Validation Data



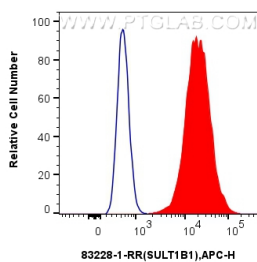
mouse colon tissue were subjected to SDS PAGE followed by western blot with 83228-1-RR (SULT1B1 antibody) at dilution of 1:10000 incubated at room temperature for 1.5 hours. This data was developed using the same antibody clone with 83228-1-PBS in a different storage buffer formulation.



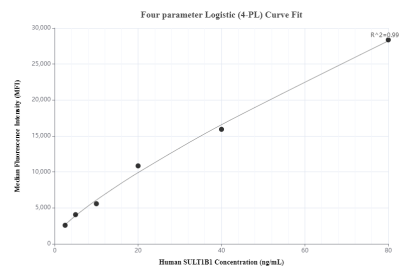
Immunohistochemical analysis of paraffin-embedded mouse colon tissue slide using 83228-1-RR (SULT1B1 antibody) at dilution of 1:400 (under 10x lens). Heat mediated antigen retrieval with Tris-EDTA buffer (pH 9.0). This data was developed using the same antibody clone with 83228-1-PBS in a different storage buffer formulation.



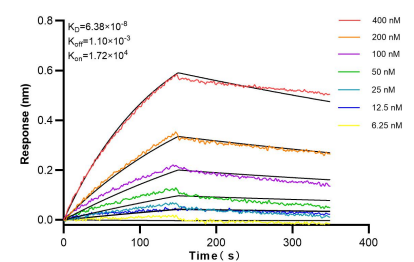
Immunohistochemical analysis of paraffin-embedded mouse colon tissue slide using 83228-1-RR (SULT1B1 antibody) at dilution of 1:400 (under 40x lens). Heat mediated antigen retrieval with Tris-EDTA buffer (pH 9.0). This data was developed using the same antibody clone with 83228-1-PBS in a different storage buffer formulation.



$1 \times 10^6$  A431 cells were intracellularly stained with 0.25  $\mu$ g SULT1B1 Recombinant antibody (83228-1-RR, Clone:240119C12) and APC-Conjugated AffiniPure Goat Anti-Rabbit IgG(H+L) (red), or 0.25  $\mu$ g Isotype Control (blue). Cells were fixed with 4% PFA and permeabilized with Flow Cytometry Perm Buffer (PF00011-C). This data was developed using the same antibody clone with 83228-1-PBS in a different storage buffer formulation.



Cytometric bead array standard curve of MP00184-1, SULT1B1 Recombinant Matched Antibody Pair, PBS Only. Capture antibody: 83228-1-PBS. Detection antibody: 83228-2-PBS. Standard: Ag9009. Range: 2.5-80 ng/mL.



Bilayer interferometry (BLI) kinetic assays of 83228-1-RR against Human SULT1B1 were performed. The affinity constant is 63.8 nM.