

For Research Use Only

SOX8 Recombinant antibody, PBS Only (Capture/Detector)



Catalog Number: 83238-3-PBS

Basic Information

Catalog Number: 83238-3-PBS	GenBank Accession Number: BC031797	Purification Method: Protein A purification
Size: 1mg/ml	GeneID (NCBI): 30812	CloneNo.: 240120H6
Source: Rabbit	UNIPROT ID: P57073	
Isotype: IgG	Full Name: SRY (sex determining region Y)-box 8	
Immunogen Catalog Number: AG34395	Calculated MW: 446 aa, 47 kDa	

Applications

Tested Applications:
IF, Indirect ELISA, Cytometric bead array

Species Specificity:
Human

Background Information

Storage

Storage:
Store at -80°C.

Storage Buffer:
PBS Only

For technical support and original validation data for this product please contact:

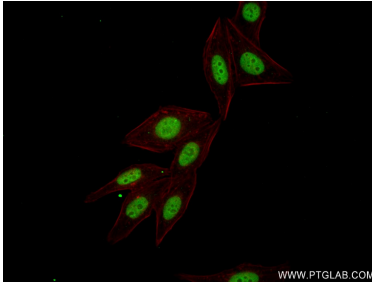
T: 4006900926

E: Proteintech-CN@ptglab.com

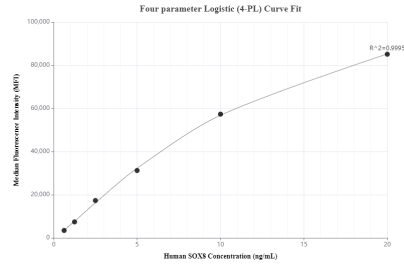
W: ptgcn.com

This product is exclusively available under Proteintech Group brand and is not available to purchase from any other manufacturer.

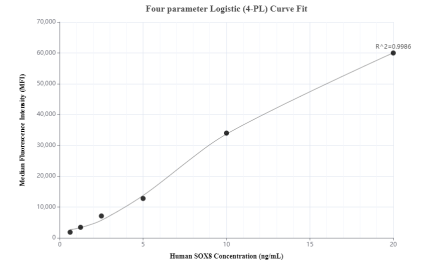
Selected Validation Data



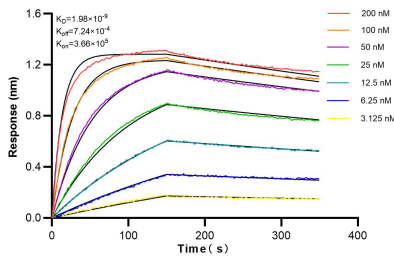
Immunofluorescent analysis of (4% PFA) fixed HepG2 cells using SOX8 antibody (83238-3-RR, Clone: 240120H6) at dilution of 1:250 and CoraLite®488-Conjugated AffiniPure Goat Anti-Rabbit IgG(H+L) (SA00013-2), CL594-Phalloidin (red). This data was developed using the same antibody clone with 83238-3-PBS in a different storage buffer formulation.



Cytometric bead array standard curve of MP00222-1, SOX8 Recombinant Matched Antibody Pair, PBS Only. Capture antibody: 83238-1-PBS. Detection antibody: 83238-3-PBS. Standard: Ag34395. Range: 0.625-20 ng/mL.



Cytometric bead array standard curve of MP00222-2, SOX8 Recombinant Matched Antibody Pair, PBS Only. Capture antibody: 83238-2-PBS. Detection antibody: 83238-3-PBS. Standard: Ag34395. Range: 0.625-20 ng/mL.



Bi-layer interferometry (BLI) kinetic assays of 83238-3-RR against Human SOX8 were performed. The affinity constant is 1.98 nM.