

For Research Use Only

Glypican 2 Recombinant antibody, PBS Only (Capture)

Catalog Number:83241-1-PBS



Basic Information

Catalog Number: 83241-1-PBS	GenBank Accession Number: BC027972	Purification Method: Protein A purification
Size: 1mg/ml	GeneID (NCBI): 221914	CloneNo.: 230518A4
Source: Rabbit	UNIPROT ID: Q8N158	Affinity: $K_D < 1.00 \times 10^{-12}$
Isotype: IgG	Full Name: glypican 2	$K_{off} < 1.00 \times 10^{-6}$
Immunogen Catalog Number: AG4041	Calculated MW: 579 aa, 63 kDa	$K_{on} = 1.07 \times 10^5$
	Observed MW: 62, 70-100 kDa	

Applications

Tested Applications:
Cytometric bead array, Indirect ELISA

Species Specificity:
human

Background Information

GPC2 (glypican 2), which is expected to be located in cell membrane and extracellular space. It is expressed in lymphoid tissue, skin and testis. The calculated molecular weight of the protein is 62 kDa. GPC2 is mainly active in growing nervous tissues and thyroid cancer tissues (PMID: 28616017). It participates in the growth and differentiation of neuronal axons. Increasing evidence has demonstrated the overexpression of GPC2 in neuroblastoma, a kind of childhood cancer. There is a discovery that GPC2 can be employed as a diagnostic, prognostic, and immunological predictor of generalized cancers. The study may broaden the train of thought toward application of GPC2 in immunotherapy (PMID: 35345673).

Storage

Storage:
Store at -80°C.
The product is shipped with ice packs. Upon receipt, store it immediately at -80°C

Storage Buffer:
PBS Only

For technical support and original validation data for this product please contact:

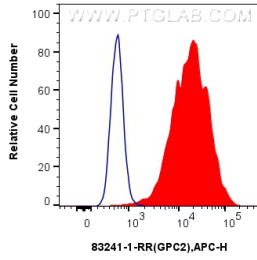
T: 4006900926

E: Proteintech-CN@ptglab.com

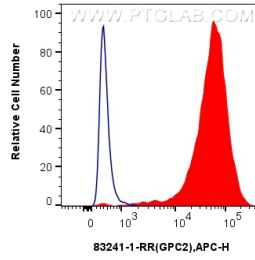
W: ptgcn.com

This product is exclusively available under Proteintech Group brand and is not available to purchase from any other manufacturer.

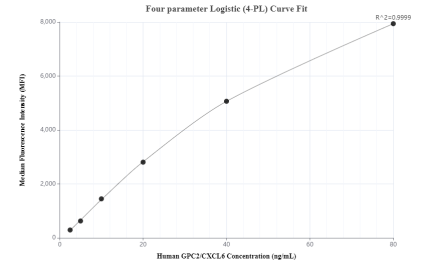
Selected Validation Data



1x10⁶ HeLa cells were intracellularly stained with 0.25 ug Gpc2 Recombinant Antibody (83241-1-RR, Clone:230518A4) and APC-Conjugated AffiniPure Goat Anti-Rabbit IgG(H+L)(red), or 0.25 ug Isotype Control (blue). Cells were fixed with 4% PFA and permeabilized with Flow Cytometry Perm Buffer (PF00011-C). This data was developed using the same antibody clone with 83241-1-PBS in a different storage buffer formulation.



1x10⁶ SH-SY5Y cells were intracellularly stained with 0.25 ug Gpc2 Recombinant Antibody (83241-1-RR, Clone:230518A4) and APC-Conjugated AffiniPure Goat Anti-Rabbit IgG(H+L)(red), or 0.25 ug Isotype Control (blue). Cells were fixed with 4% PFA and permeabilized with Flow Cytometry Perm Buffer (PF00011-C). This data was developed using the same antibody clone with 83241-1-PBS in a different storage buffer formulation.



Cytometric bead array standard curve of MP00156-2, GPC2 Recombinant Matched Antibody Pair, PBS Only. Capture antibody: 83241-1-PBS. Detection antibody: 83241-2-PBS. Standard: Ag4041. Range: 2.5-80 ng/mL.