

For Research Use Only

# CBX1 Recombinant antibody, PBS Only (Capture)

Catalog Number: 83248-1-PBS



## Basic Information

<b>Catalog Number:</b> 83248-1-PBS	<b>GenBank Accession Number:</b> BC002609	<b>Purification Method:</b> Protein A purification
<b>Size:</b> 1mg/ml	<b>GeneID (NCBI):</b> 10951	<b>CloneNo.:</b> 240075F7
<b>Source:</b> Rabbit	<b>UNIPROT ID:</b> P83916	
<b>Isotype:</b> IgG	<b>Full Name:</b> chromobox homolog 1 (HP1 beta homolog Drosophila )	
<b>Immunogen Catalog Number:</b> AG34901	<b>Calculated MW:</b> 27 kDa	

## Applications

**Tested Applications:**  
Cytometric bead array, Sandwich ELISA, Indirect ELISA, Sample test

**Species Specificity:**  
human

## Background Information

### Storage

**Storage:**  
Store at -80°C.  
**The product is shipped with ice packs. Upon receipt, store it immediately at -80°C**

**Storage Buffer:**  
PBS Only

For technical support and original validation data for this product please contact:

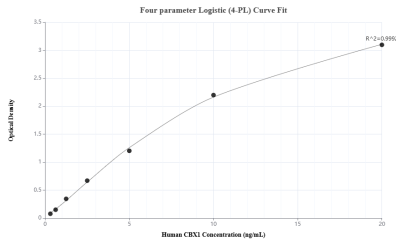
T: 4006900926

E: Proteintech-CN@ptglab.com

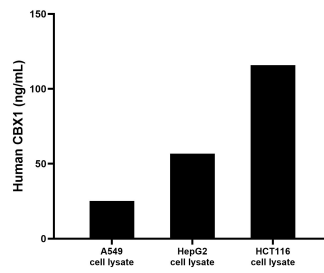
W: ptgcn.com

**This product is exclusively available under Proteintech Group brand and is not available to purchase from any other manufacturer.**

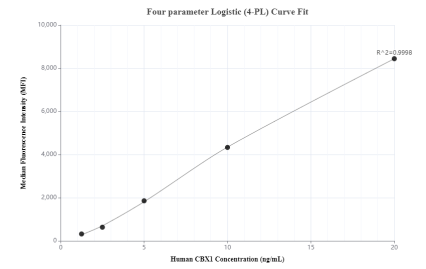
## Selected Validation Data



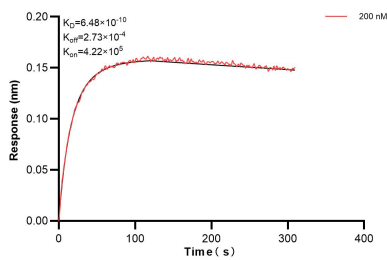
Sandwich ELISA standard curve of MP00224-1, Human CBX1 Recombinant Matched Antibody Pair - PBS only. 83248-1-PBS was coated to a plate as the capture antibody and incubated with serial dilutions of standard Ag34901. 83248-2-PBS was HRP conjugated as the detection antibody. Range: 0.313-20 ng/mL



A549, HepG2 and HCT116 cell lysates were measured. The human CBX1 concentration of detected samples was determined to be 25.23 ng/mL (based on a 1.0 mg/mL extract load) in A549 cell lysate, 56.68 ng/mL (based on a 1.2 mg/mL extract load) in HepG2 cell lysate and 115.85 ng/mL (based on a 2.0 mg/mL extract load) in HCT116 cell lysate.



Cytometric bead array standard curve of MP00224-1, CBX1 Recombinant Matched Antibody Pair, PBS Only. Capture antibody: 83248-1-PBS. Detection antibody: 83248-2-PBS. Standard: Ag34901. Range: 1.25-20 ng/mL



Biolayer interferometry (BLI) kinetic assay of 83248-1-PBS against Human CBX1 was performed. The affinity constant is 0.648 nM.