

For Research Use Only

CBX1 Recombinant antibody, PBS Only (Detector)

Catalog Number:83248-2-PBS



Basic Information

Catalog Number: 83248-2-PBS	GenBank Accession Number: BC002609	Purification Method: Protein A purification
Size: 1mg/ml	GeneID (NCBI): 10951	CloneNo.: 240075H1
Source: Rabbit	UNIPROT ID: P83916	
Isotype: IgG	Full Name: chromobox homolog 1 (HP1 beta homolog Drosophila)	
Immunogen Catalog Number: AG34901	Calculated MW: 27 kDa	

Applications

Tested Applications:
Cytometric bead array, Sandwich ELISA, Indirect ELISA, Sample test

Species Specificity:
human

Background Information

Storage

Storage:
Store at -80°C.
The product is shipped with ice packs. Upon receipt, store it immediately at -80°C

Storage Buffer:
PBS Only

For technical support and original validation data for this product please contact:

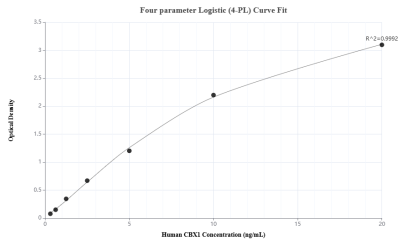
T: 4006900926

E: Proteintech-CN@ptglab.com

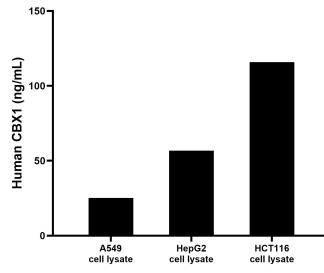
W: ptgcn.com

This product is exclusively available under Proteintech Group brand and is not available to purchase from any other manufacturer.

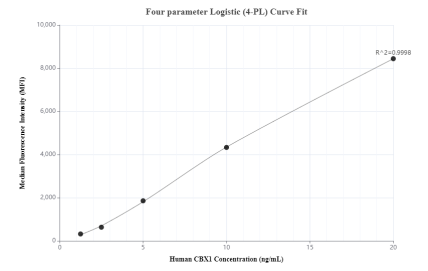
Selected Validation Data



Sandwich ELISA standard curve of MP00224-1, Human CBX1 Recombinant Matched Antibody Pair - PBS only. 83248-1-PBS was coated to a plate as the capture antibody and incubated with serial dilutions of standard Ag34901. 83248-2-PBS was HRP conjugated as the detection antibody. Range: 0.313-20 ng/mL



A549, HepG2 and HCT116 cell lysates were measured. The human CBX1 concentration of detected samples was determined to be 25.23 ng/mL (based on a 1.0 mg/mL extract load) in A549 cell lysate, 56.68 ng/mL (based on a 1.2 mg/mL extract load) in HepG2 cell lysate and 115.85 ng/mL (based on a 2.0 mg/mL extract load) in HCT116 cell lysate.



Cytometric bead array standard curve of MP00224-1, CBX1 Recombinant Matched Antibody Pair, PBS Only. Capture antibody: 83248-1-PBS. Detection antibody: 83248-2-PBS. Standard: Ag34901. Range: 1.25-20 ng/mL