

For Research Use Only

# CBX1 Recombinant antibody, PBS Only



Catalog Number: 83248-3-PBS

## Basic Information

<b>Catalog Number:</b> 83248-3-PBS	<b>GenBank Accession Number:</b> BC002609	<b>Purification Method:</b> Protein A purification
<b>Size:</b> 1 mg/ml	<b>GeneID (NCBI):</b> 10951	<b>CloneNo.:</b> 240075E1
<b>Source:</b> Rabbit	<b>UNIPROT ID:</b> P83916	
<b>Isotype:</b> IgG	<b>Full Name:</b> chromobox homolog 1 (HP1 beta homolog Drosophila )	
<b>Immunogen Catalog Number:</b> AG34901	<b>Calculated MW:</b> 27 kDa	

## Applications

**Tested Applications:**  
Indirect ELISA, IF/ICC, WB

**Species Specificity:**  
rat, mouse, human

## Background Information

### Storage

**Storage:**  
Store at -80°C.  
**The product is shipped with ice packs. Upon receipt, store it immediately at -80°C**  
**Storage Buffer:**  
PBS Only

For technical support and original validation data for this product please contact:

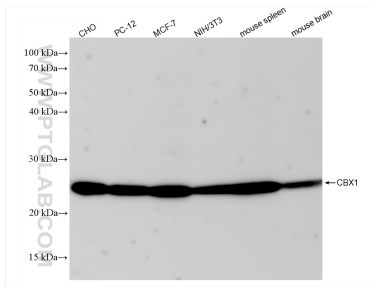
T: 4006900926

E: [Proteintech-CN@ptglab.com](mailto:Proteintech-CN@ptglab.com)

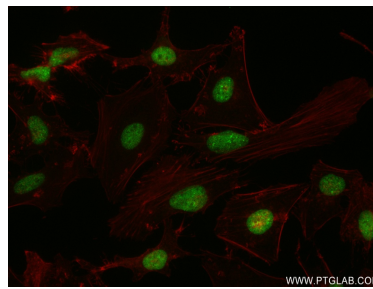
W: [ptgcn.com](http://ptgcn.com)

**This product is exclusively available under Proteintech Group brand and is not available to purchase from any other manufacturer.**

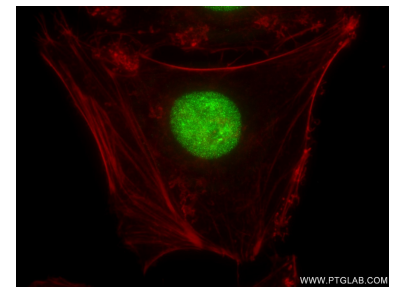
## Selected Validation Data



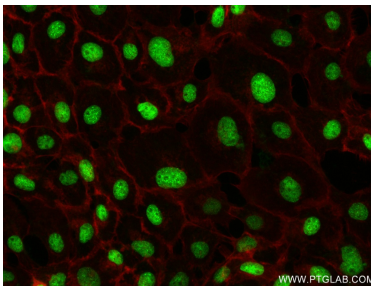
Various lysates were subjected to SDS PAGE followed by western blot with 83248-3-RR (CBX1 antibody) at dilution of 1:5000 incubated at room temperature for 1.5 hours. This data was developed using the same antibody clone with 83248-3-PBS in a different storage buffer formulation.



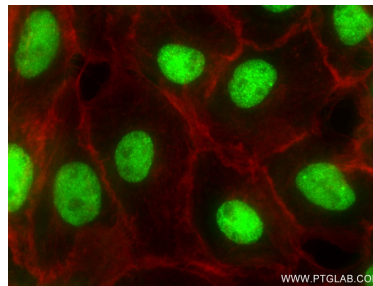
Immunofluorescent analysis of (4% PFA) fixed HeLa cells using CBX1 antibody (83248-3-RR, Clone: 240075E1 ) at dilution of 1:250 and CoraLite®488-Conjugated AffiniPure Goat Anti-Mouse IgG(H+L) (SA00013-1), CL594-Phalloidin (red). This data was developed using the same antibody clone with 83248-3-PBS in a different storage buffer formulation.



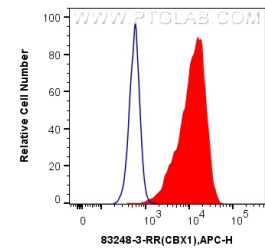
Immunofluorescent analysis of (4% PFA) fixed HeLa cells using CBX1 antibody (83248-3-RR, Clone: 240075E1 ) at dilution of 1:250 and CoraLite®488-Conjugated AffiniPure Goat Anti-Mouse IgG(H+L) (SA00013-1), CL594-Phalloidin (red). This data was developed using the same antibody clone with 83248-3-PBS in a different storage buffer formulation.



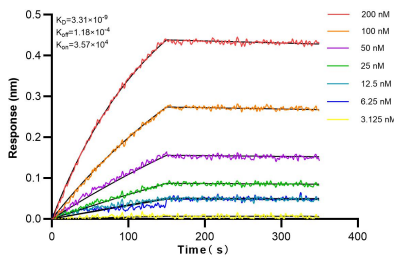
Immunofluorescent analysis of (4% PFA) fixed A431 cells using CBX1 antibody (83248-3-RR, Clone: 240075E1 ) at dilution of 1:250 and CoraLite®488-Conjugated AffiniPure Goat Anti-Mouse IgG(H+L) (SA00013-1), CL594-Phalloidin (red). This data was developed using the same antibody clone with 83248-3-PBS in a different storage buffer formulation.



Immunofluorescent analysis of (4% PFA) fixed A431 cells using CBX1 antibody (83248-3-RR, Clone: 240075E1 ) at dilution of 1:250 and CoraLite®488-Conjugated AffiniPure Goat Anti-Mouse IgG(H+L) (SA00013-1), CL594-Phalloidin (red). This data was developed using the same antibody clone with 83248-3-PBS in a different storage buffer formulation.



$1 \times 10^6$  HeLa cells were intracellularly stained with 0.25  $\mu$ g CBX1 Recombinant antibody (83248-3-RR, Clone:240075E1) and APC-Conjugated AffiniPure Goat Anti-Rabbit IgG(H+L)(red), or 0.25  $\mu$ g Isotype Control (blue). Cells were fixed and permeabilized with Transcription Factor Staining Buffer Kit (PF00011). This data was developed using the same antibody clone with 83248-3-PBS in a different storage buffer formulation.



Biolayer interferometry (BLI) kinetic assays of 83248-3-RR against Human CBX1 were performed. The affinity constant is 3.31 nM.