

For Research Use Only

CBX5 Recombinant antibody, PBS Only (Detector)



Catalog Number: 83258-5-PBS

Basic Information

Catalog Number: 83258-5-PBS	GenBank Accession Number: BC006821	Purification Method: Protein A purification
Size: 1mg/ml	GeneID (NCBI): 23468	CloneNo.: 240145F11
Source: Rabbit	UNIPROT ID: P45973	
Isotype: IgG	Full Name: chromobox homolog 5 (HP1 alpha homolog, Drosophila)	
Immunogen Catalog Number: AG34810	Calculated MW: 191 aa, 22 kDa	

Applications

Tested Applications:
WB, IF, Indirect ELISA, Cytometric bead array

Species Specificity:
Human

Background Information

Storage

Storage:
Store at -80°C.

Storage Buffer:
PBS Only

For technical support and original validation data for this product please contact:

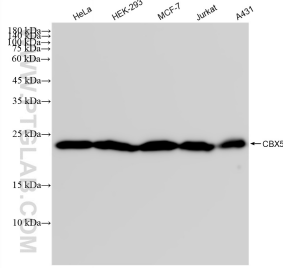
T: 4006900926

E: Proteintech-CN@ptglab.com

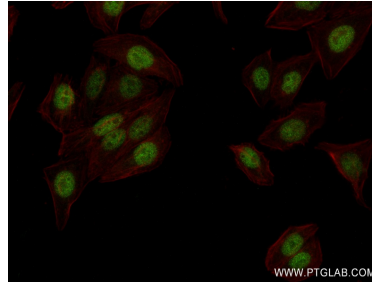
W: ptgcn.com

This product is exclusively available under Proteintech Group brand and is not available to purchase from any other manufacturer.

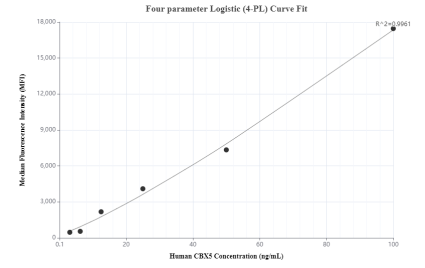
Selected Validation Data



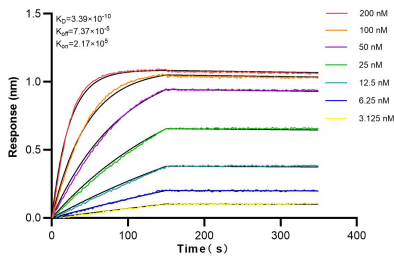
Various lysates were subjected to SDS PAGE followed by western blot with 83258-5-RR (CBX5 antibody) at dilution of 1:10000 incubated at room temperature for 1.5 hours. This data was developed using the same antibody clone with 83258-5-PBS in a different storage buffer formulation.



Immunofluorescent analysis of (4% PFA) fixed HepG2 cells using CBX5 antibody (83258-5-RR, Clone: 240145F11) at dilution of 1:400 and CoraLite®488-Conjugated AffiniPure Goat Anti-Rabbit IgG(H+L) (SA00013-2), CL594-Phalloidin (red). This data was developed using the same antibody clone with 83258-5-PBS in a different storage buffer formulation.



Cytometric bead array standard curve of MP00181-3, CBX5 Recombinant Matched Antibody Pair, PBS Only. Capture antibody: 83258-2-PBS. Detection antibody: 83258-5-PBS. Standard: Ag34810. Range: 3.125-100 ng/mL.



Bi-layer interferometry (BLI) kinetic assays of 83258-5-RR against Human CBX5 were performed. The affinity constant is 0.339 nM.