

For Research Use Only

CBX5 Recombinant antibody

Catalog Number: 83258-5-RR



Basic Information

Catalog Number: 83258-5-RR	GenBank Accession Number: BC006821	Purification Method: Protein A purification
Size: 1000 µg/ml	GeneID (NCBI): 23468	CloneNo.: 240145F11
Source: Rabbit	UNIPROT ID: P45973	Recommended Dilutions: WB 1:5000-1:50000 IF 1:200-1:800
Isotype: IgG	Full Name: chromobox homolog 5 (HP1 alpha homolog, Drosophila)	
Immunogen Catalog Number: AG34810	Calculated MW: 191 aa, 22 kDa	
	Observed MW: 22 kDa	

Applications

Tested Applications: WB, IF/ICC, ELISA	Positive Controls:
Species Specificity: Human	WB : HeLa cells, HEK-293 cells, MCF-7 cells, Jurkat cells, A431 cells IF : HepG2 cells,

Background Information

Chromobox protein homolog 5 (CBX5), also named heterochromatin protein 1 alpha (HP1a), is a highly conserved nonhistone protein involved in heterochromatin formation and gene silencing in different species including humans. HP1a is a component of heterochromatin that recognizes and binds histone H3 tails methylated at 'Lys-9' (H3K9me), leading to epigenetic repression. In contrast, it is excluded from chromatin when 'Tyr-41' of histone H3 is phosphorylated (H3Y41ph). It may interact with lamin-Breceptor. HP1a is involved in the formation of functional kinetochore through interaction with MIS12 complex proteins. Phosphorylation of HP1 and LBR during interphase mitosis may be responsible for some of the alterations in chromatin organization and nuclear structure which occur at various times during the cell cycle. The HP1a was expressed in nucleus and associates specifically with chromatin during metaphase and anaphase. Recent studies have shown that HP1a is present at many euchromatic sites and positively regulates euchromatic gene expression through RNA transcript association and interaction with hnRNPs in Drosophila (19798443).

Storage

Storage:
Store at -20°C. Stable for one year after shipment.
Storage Buffer:
PBS with 0.02% sodium azide and 50% glycerol pH 7.3.
Aliquoting is unnecessary for -20°C storage

For technical support and original validation data for this product please contact:

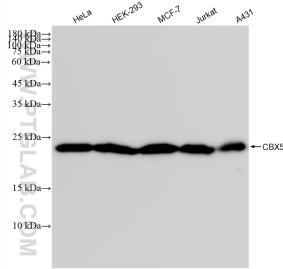
T: 4006900926

E: Proteintech-CN@ptglab.com

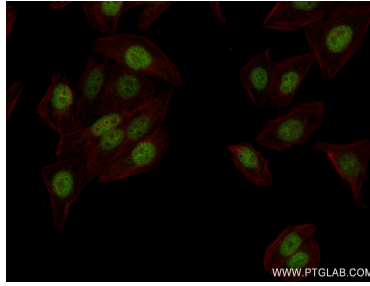
W: ptgcn.com

This product is exclusively available under Proteintech Group brand and is not available to purchase from any other manufacturer.

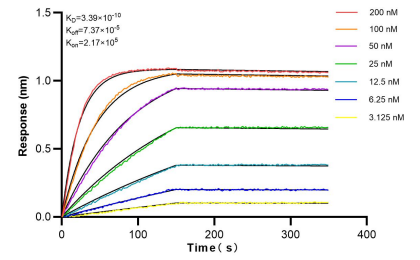
Selected Validation Data



Various lysates were subjected to SDS PAGE followed by western blot with 83258-5-RR (CBX5 antibody) at dilution of 1:10000 incubated at room temperature for 1.5 hours.



Immunofluorescent analysis of (4% PFA) fixed HepG2 cells using CBX5 antibody (83258-5-RR, Clone: 240145F11) at dilution of 1:400 and CoraLite®488-Conjugated AffiniPure Goat Anti-Rabbit IgG(H+L) (SA00013-2), CL594-Phalloidin (red).



Bi-layer interferometry (BLI) kinetic assays of 83258-5-RR against Human CBX5 were performed. The affinity constant is 0.339 nM.