

For Research Use Only

# CBX5 Recombinant antibody, PBS Only



Catalog Number: 83258-6-PBS

## Basic Information

<b>Catalog Number:</b> 83258-6-PBS	<b>GenBank Accession Number:</b> BC006821	<b>Purification Method:</b> Protein A purification
<b>Size:</b> 1 mg/ml	<b>GeneID (NCBI):</b> 23468	<b>CloneNo.:</b> 240145G12
<b>Source:</b> Rabbit	<b>UNIPROT ID:</b> P45973	
<b>Isotype:</b> IgG	<b>Full Name:</b> chromobox homolog 5 (HP1 alpha homolog, Drosophila)	
<b>Immunogen Catalog Number:</b> AG34810	<b>Calculated MW:</b> 191 aa, 22 kDa	

## Applications

**Tested Applications:**  
WB, IF, ELISA

**Species Specificity:**  
Human

## Background Information

### Storage

**Storage:**  
Store at -80°C.  
**The product is shipped with ice packs. Upon receipt, store it immediately at -80°C**

**Storage Buffer:**  
PBS Only

For technical support and original validation data for this product please contact:

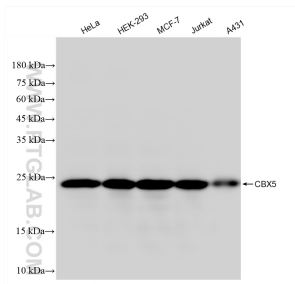
T: 4006900926

E: [Proteintech-CN@ptglab.com](mailto:Proteintech-CN@ptglab.com)

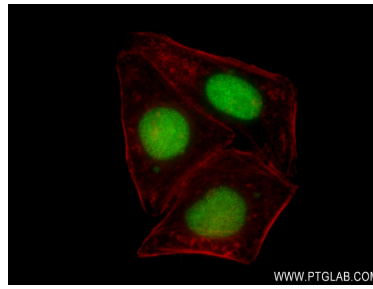
W: [ptgcn.com](http://ptgcn.com)

**This product is exclusively available under Proteintech Group brand and is not available to purchase from any other manufacturer.**

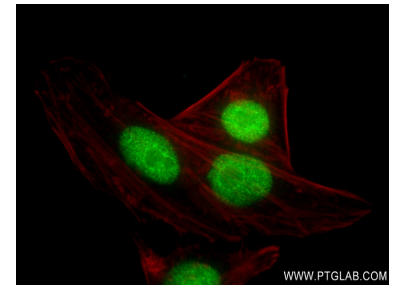
## Selected Validation Data



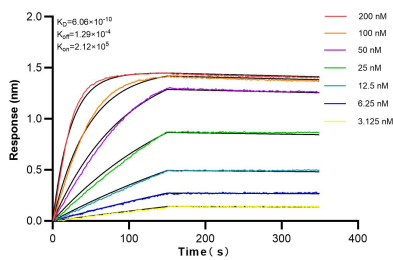
Various lysates were subjected to SDS PAGE followed by western blot with 83258-6-RR (CBX5 antibody) at dilution of 1:10000 incubated at room temperature for 1.5 hours. This data was developed using the same antibody clone with 83258-6-PBS in a different storage buffer formulation.



Immunofluorescent analysis of (4% PFA) fixed HepG2 cells using CBX5 antibody (83258-6-RR, Clone: 240145G12) at dilution of 1:400 and CoraLite®488-Conjugated AffiniPure Goat Anti-Mouse IgG(H+L) (SA00013-1), CL594-Phalloidin (red). This data was developed using the same antibody clone with 83258-6-PBS in a different storage buffer formulation.



Immunofluorescent analysis of (4% PFA) fixed HepG2 cells using CBX5 antibody (83258-6-RR, Clone: 240145G12) at dilution of 1:400 and CoraLite®488-Conjugated AffiniPure Goat Anti-Mouse IgG(H+L) (SA00013-1), CL594-Phalloidin (red). This data was developed using the same antibody clone with 83258-6-PBS in a different storage buffer formulation.



Biolayer interferometry (BLI) kinetic assays of 83258-6-RR against Human CBX5 were performed. The affinity constant is 0.606 nM.