

For Research Use Only

# SNAP25 Recombinant antibody

Catalog Number: 83259-5-RR



## Basic Information

<b>Catalog Number:</b> 83259-5-RR	<b>GenBank Accession Number:</b> BC010647	<b>Purification Method:</b> Protein A purification
<b>Size:</b> 1000 µg/ml	<b>GeneID (NCBI):</b> 6616	<b>CloneNo.:</b> 240069F12
<b>Source:</b> Rabbit	<b>UNIPROT ID:</b> P60880	<b>Recommended Dilutions:</b> WB 1:5000-1:50000 IF 1:125-1:500
<b>Isotype:</b> IgG	<b>Full Name:</b> synaptosomal-associated protein, 25kDa	
<b>Immunogen Catalog Number:</b> AG6695	<b>Calculated MW:</b> 23 kDa	
	<b>Observed MW:</b> 25 kDa	

## Applications

<b>Tested Applications:</b> WB, IF/ICC, ELISA	<b>Positive Controls:</b>
<b>Species Specificity:</b> Human, rat, mouse	<b>WB:</b> PC-12 cells, mouse brain tissue, rat brain tissue <b>IF:</b> PC-12 cells,

## Background Information

The synaptosomal associated protein of 25 kD (SNAP-25) was first identified as a major synaptic protein by Wilson and colleagues. The protein interacts with syntaxin and synaptobrevin through its N-terminal and C-terminal - helical domains. Its palmitoylation domain is located in the middle of the molecule that contains four cysteine residues. Mutation of the cysteines abolishes palmitoylation and membrane binding. Several elegant studies using synaptosome preparations and permeabilized PC12 cells have suggested that SNAP-25 may act in the late post-docking steps of exocytosis. By limited proteolysis and in vitro binding assay, it is proposed that the two helix domains act independently and contribute equally to form the SNARE complex with syntaxin and synaptobrevin. It seems that a major regulatory element is located in the C-terminus of SNAP-25. Removing a 9 amino acid sequence of SNAP-25 inhibited neurosecretion in chromaffin cells.

## Storage

**Storage:**  
Store at -20°C. Stable for one year after shipment.  
**Storage Buffer:**  
PBS with 0.02% sodium azide and 50% glycerol pH 7.3.  
Aliquoting is unnecessary for -20°C storage

For technical support and original validation data for this product please contact:

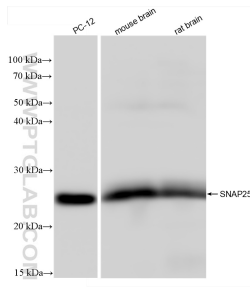
T: 4006900926

E: [Proteintech-CN@ptglab.com](mailto:Proteintech-CN@ptglab.com)

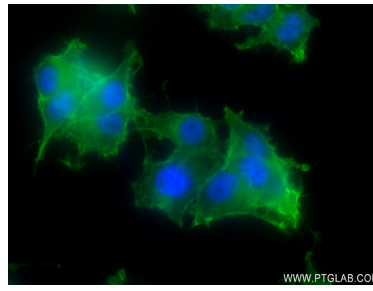
W: [ptgcn.com](http://ptgcn.com)

**This product is exclusively available under Proteintech Group brand and is not available to purchase from any other manufacturer.**

## Selected Validation Data



Various lysates were subjected to SDS PAGE followed by western blot with 83259-5-RR (SNAP25 antibody) at dilution of 1:10000 incubated at room temperature for 1.5 hours.



Immunofluorescent analysis of (4% PFA) fixed PC-12 cells using SNAP25 antibody (83259-5-RR, Clone: 240069F12 ) at dilution of 1:250 and CoraLite®488-Conjugated AffiniPure Goat Anti-Mouse IgG(H+L) (SA00013-1).