

For Research Use Only

# DUS2L Recombinant antibody, PBS Only



Catalog Number: 83265-7-PBS

## Basic Information

<b>Catalog Number:</b> 83265-7-PBS	<b>GenBank Accession Number:</b> BC006527	<b>Purification Method:</b> Protein A purification
<b>Size:</b> 1 mg/ml	<b>GeneID (NCBI):</b> 54920	<b>CloneNo.:</b> 240192G8
<b>Source:</b> Rabbit	<b>UNIPROT ID:</b> Q9NX74	
<b>Isotype:</b> IgG	<b>Full Name:</b> dihydrouridine synthase 2-like, SMM1 homolog (S. cerevisiae)	
<b>Immunogen Catalog Number:</b> AG23831		

## Applications

**Tested Applications:**  
WB, ELISA

**Species Specificity:**  
Human

## Background Information

### Storage

**Storage:**  
Store at -80°C.  
**The product is shipped with ice packs. Upon receipt, store it immediately at -80°C**

**Storage Buffer:**  
PBS Only

For technical support and original validation data for this product please contact:

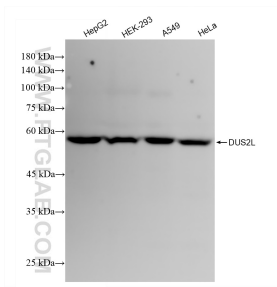
T: 4006900926

E: [Proteintech-CN@ptglab.com](mailto:Proteintech-CN@ptglab.com)

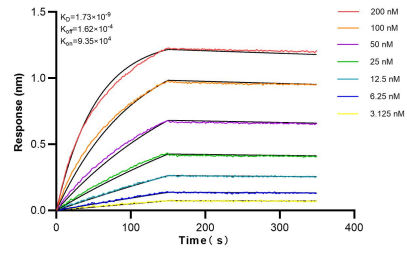
W: [ptgcn.com](http://ptgcn.com)

**This product is exclusively available under Proteintech Group brand and is not available to purchase from any other manufacturer.**

## Selected Validation Data



Various lysates were subjected to SDS PAGE followed by western blot with 83265-7-RR (DUS2L antibody) at dilution of 1:5000 incubated at room temperature for 1.5 hours. This data was developed using the same antibody clone with 83265-7-PBS in a different storage buffer formulation.



Biolayer interferometry (BLI) kinetic assays of 83265-7-RR against Human DUS2L were performed. The affinity constant is 1.93 nM.