

For Research Use Only

DUS2L Recombinant antibody, PBS Only



Catalog Number: 83265-8-PBS

Basic Information

Catalog Number: 83265-8-PBS	GenBank Accession Number: BC006527	Purification Method: Protein A purification
Size: 1 mg/ml	GeneID (NCBI): 54920	CloneNo.: 240192C6
Source: Rabbit	UNIPROT ID: Q9NX74	
Isotype: IgG	Full Name: dihydrouridine synthase 2-like, SMM1 homolog (<i>S. cerevisiae</i>)	
Immunogen Catalog Number: AG23831		

Applications

Tested Applications:
WB, ELISA

Species Specificity:
Human

Background Information

Storage

Storage:
Store at -80°C.
The product is shipped with ice packs. Upon receipt, store it immediately at -80°C

Storage Buffer:
PBS Only

For technical support and original validation data for this product please contact:

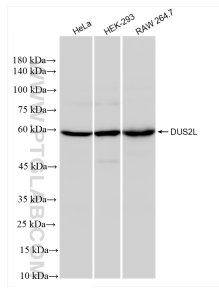
T: 4006900926

E: Proteintech-CN@ptglab.com

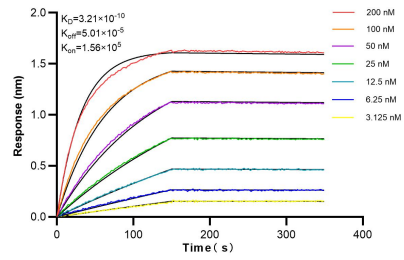
W: ptgcn.com

This product is exclusively available under Proteintech Group brand and is not available to purchase from any other manufacturer.

Selected Validation Data



Various lysates were subjected to SDS PAGE followed by western blot with 83265-8-RR (DUS2L antibody) at dilution of 1:5000 incubated at room temperature for 1.5 hours. This data was developed using the same antibody clone with 83265-8-PBS in a different storage buffer formulation.



Biolayer interferometry (BLI) kinetic assays of 83265-8-RR against Human DUS2L were performed. The affinity constant is 0.321 nM.