

For Research Use Only

# DUS2L Recombinant antibody

Catalog Number:83265-8-RR



## Basic Information

Catalog Number:

83265-8-RR

Size:

1000 ug/ml

Source:

Rabbit

Isotype:

IgG

Immunogen Catalog Number:

AG23831

GenBank Accession Number:

BC006527

GeneID (NCBI):

54920

UNIPROT ID:

Q9NX74

Full Name:

dihydrouridine synthase 2-like, SMM1 homolog (*S. cerevisiae*)

Observed MW:

55 kDa

Purification Method:

Protein A purification

CloneNo.:

240192C6

Recommended Dilutions:

WB 1:2000-1:10000

## Applications

Tested Applications:

WB, ELISA

Species Specificity:

human, mouse

Positive Controls:

WB : HeLa cells, HEK-293 cells, RAW 264.7 cells

## Background Information

Dihydrouridine synthase 2(DUS2L), is a cytoplasmic protein that catalyzes the conversion of uridine residues to dihydrouridine in the D-loop of tRNA. transfection of DUS2 cDNA into a human lung carcinoma cell line increased dihydrouridine in tRNA, whereas transfection of DUS2 small interfering RNA (siRNA) reduced tRNA-dihydrouridine, confirming that DUS2 has dihydrouridine synthase activity.

## Storage

Storage:

Store at -20°C. Stable for one year after shipment.

Storage Buffer:

PBS with 0.02% sodium azide and 50% glycerol pH 7.3.

Aliquoting is unnecessary for -20°C storage

For technical support and original validation data for this product please contact:

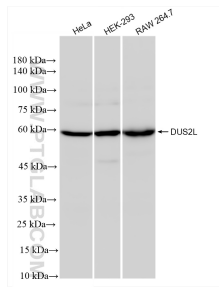
T: 4006900926

E: Proteintech-CN@ptglab.com

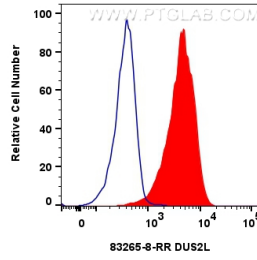
W: ptgcn.com

This product is exclusively available under Proteintech Group brand and is not available to purchase from any other manufacturer.

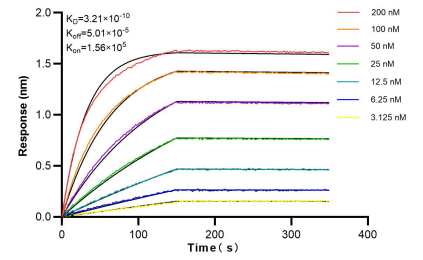
## Selected Validation Data



Various lysates were subjected to SDS PAGE followed by western blot with 83265-8-RR (DUS2L antibody) at dilution of 1:5000 incubated at room temperature for 1.5 hours.



1x10<sup>6</sup> HeLa cells were intracellularly stained with 0.25 ug DUS2L Recombinant antibody (83265-8-RR, Clone:240192C6) and CoraLite®488-Conjugated Goat Anti-Rabbit IgG(H+L) (SA00013-2)(red), or 0.25 ug Control Antibody (blue). Cells were fixed with 4% PFA and permeabilized with Flow Cytometry Perm Buffer (PF00011-C).



Biacore sensorgram (BLI) kinetic assays of 83265-8-RR against Human DUS2L were performed. The affinity constant is 0.321 nM.