

For Research Use Only

SMOC2 Recombinant antibody, PBS Only (Detector)



Catalog Number: 83268-1-PBS

Basic Information

Catalog Number: 83268-1-PBS	GenBank Accession Number: BC047583	Purification Method: Protein A purification
Size: 1mg/ml	GeneID (NCBI): 64094	CloneNo.: 240107E9
Source: Rabbit	UNIPROT ID: Q9H3U7	Affinity: $K_D = 2.22 \times 10^{-9}$
Isotype: IgG	Full Name: SPARC related modular calcium binding 2	$K_{off} = 1.68 \times 10^{-4}$ $K_{on} = 7.58 \times 10^4$
Immunogen Catalog Number: AG34966	Calculated MW: 50 kDa	

Applications

Tested Applications:
Cytometric bead array, Sandwich ELISA, Indirect ELISA, Sample test

Species Specificity:
human

Background Information

Storage

Storage:
Store at -80°C.
The product is shipped with ice packs. Upon receipt, store it immediately at -80°C

Storage Buffer:
PBS Only

For technical support and original validation data for this product please contact:

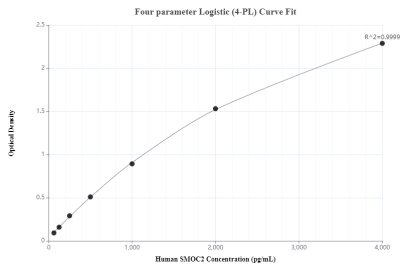
T: 4006900926

E: Proteintech-CN@ptglab.com

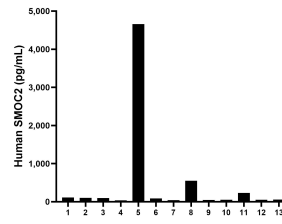
W: ptgcn.com

This product is exclusively available under Proteintech Group brand and is not available to purchase from any other manufacturer.

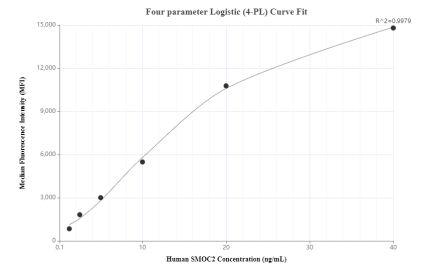
Selected Validation Data



Sandwich ELISA standard curve of MP00228-1 Human SMOC2 Monoclonal Matched Antibody Pair - PBS only. 83268-3-PBS was coated to a plate as the capture antibody and incubated with serial dilutions of standard Ag34966. 83268-1-PBS was HRP conjugated as the detection antibody. Range: 62.5-4000 pg/mL



Serum of thirteen individual healthy human donors were measured. The human SMOC2 concentration of detected samples was determined to be 471.5 pg/mL with a range of 39.6-4,658.9 pg/mL.



Cytometric bead array standard curve of MP00228-1, SMOC2 Recombinant Matched Antibody Pair, PBS Only. Capture antibody: 83268-3-PBS. Detection antibody: 83268-1-PBS. Standard: Ag34966. Range: 1.25-40 ng/mL