

For Research Use Only

# SMOC2 Recombinant antibody, PBS Only (Capture)



Catalog Number: 83268-3-PBS

## Basic Information

<b>Catalog Number:</b> 83268-3-PBS	<b>GenBank Accession Number:</b> BC047583	<b>Purification Method:</b> Protein A purification
<b>Size:</b> 1mg/ml	<b>GeneID (NCBI):</b> 64094	<b>CloneNo.:</b> 240107G1
<b>Source:</b> Rabbit	<b>UNIPROT ID:</b> Q9H3U7	<b>Affinity:</b> $K_D = 1.99 \times 10^{-9}$
<b>Isotype:</b> IgG	<b>Full Name:</b> SPARC related modular calcium binding 2	$K_{off} = 1.97 \times 10^{-4}$ $K_{on} = 9.90 \times 10^4$
<b>Immunogen Catalog Number:</b> AG34966	<b>Calculated MW:</b> 50 kDa	

## Applications

**Tested Applications:**  
Cytometric bead array, Sandwich ELISA, Indirect ELISA, Sample test

**Species Specificity:**  
human

## Background Information

### Storage

**Storage:**  
Store at -80°C.  
**The product is shipped with ice packs. Upon receipt, store it immediately at -80°C**

**Storage Buffer:**  
PBS Only

For technical support and original validation data for this product please contact:

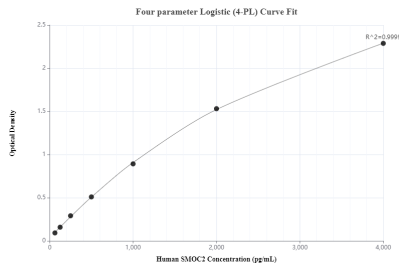
T: 4006900926

E: [Proteintech-CN@ptglab.com](mailto:Proteintech-CN@ptglab.com)

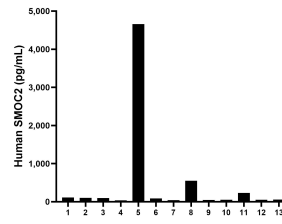
W: [ptgcn.com](http://ptgcn.com)

**This product is exclusively available under Proteintech Group brand and is not available to purchase from any other manufacturer.**

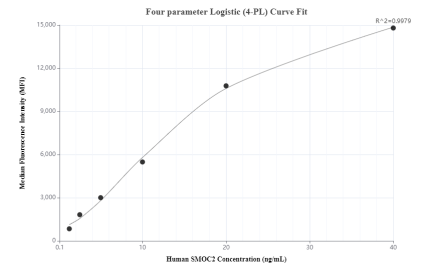
## Selected Validation Data



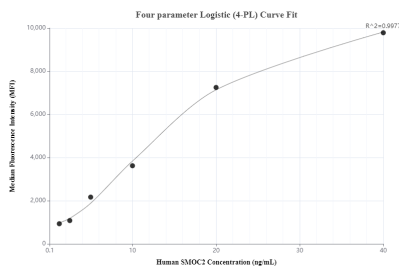
Sandwich ELISA standard curve of MP00228-1 Human SMOC2 Monoclonal Matched Antibody Pair - PBS only. 83268-3-PBS was coated to a plate as the capture antibody and incubated with serial dilutions of standard Ag34966. 83268-1-PBS was HRP conjugated as the detection antibody. Range: 62.5-4000 pg/mL



Serum of thirteen individual healthy human donors were measured. The human SMOC2 concentration of detected samples was determined to be 471.5 pg/mL with a range of 39.6-4,658.9 pg/mL.



Cytometric bead array standard curve of MP00228-1, SMOC2 Recombinant Matched Antibody Pair, PBS Only. Capture antibody: 83268-3-PBS. Detection antibody: 83268-1-PBS. Standard: Ag34966. Range: 1.25-40 ng/mL



Cytometric bead array standard curve of MP00228-2, SMOC2 Recombinant Matched Antibody Pair, PBS Only. Capture antibody: 83268-3-PBS. Detection antibody: 83268-2-PBS. Standard: Ag34966. Range: 1.25-40 ng/mL